



Spatial Planning and Impact of COVID 19

(Socio-Economic Impact of COVID 19 in Yangon Informal Settlements)

UN-Habitat Myanmar

Bijay Karmacharya, CPM

3 February, 2021

COVID 19 OUTBREAK PATTERN IN MYANMAR

- ❑ Cities are the hot spots of COVID 19 out break also in Myanmar
 - ❑ Total confirmed Cases: 138,368
 - ❑ Total recovered : 122,781
 - ❑ Total deaths among laboratory confirmed cases: 3,082
- ❑ 70% of cases in Yangon Region and of that 70% in the city.
- ❑ Mandalay City, - Second city
- ❑ Rakhine State- Air Travel, mobility of people
- ❑ Other Region: low number and low increase rate: time lag- Largely Rural Characteristics.
- ❑ Poor and Vulnerable are impacted the most

- ❑ COVID-19 health response in urban areas
- ❑ COVID-19 measures related to mobility restrictions
- ❑ Restrictions on air-travel
- ❑ Socio-economic response to COVID-19

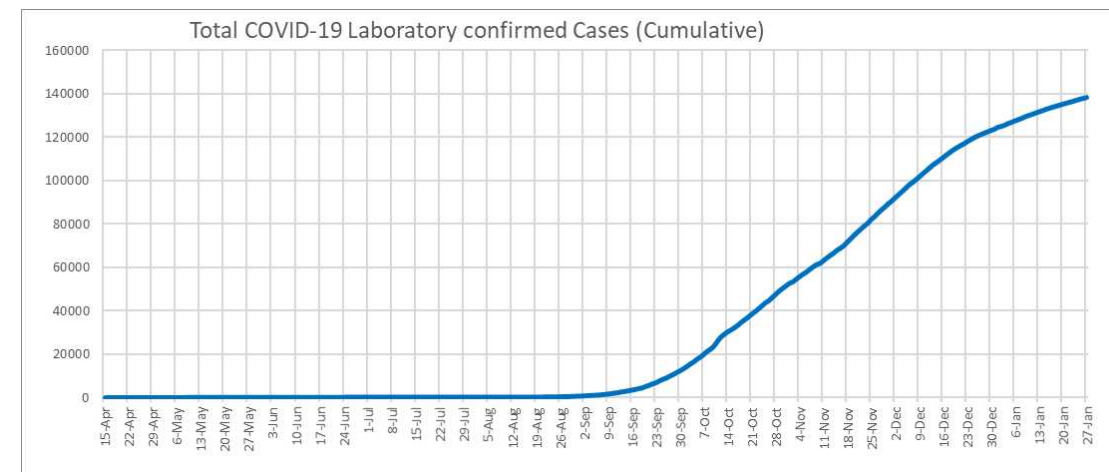
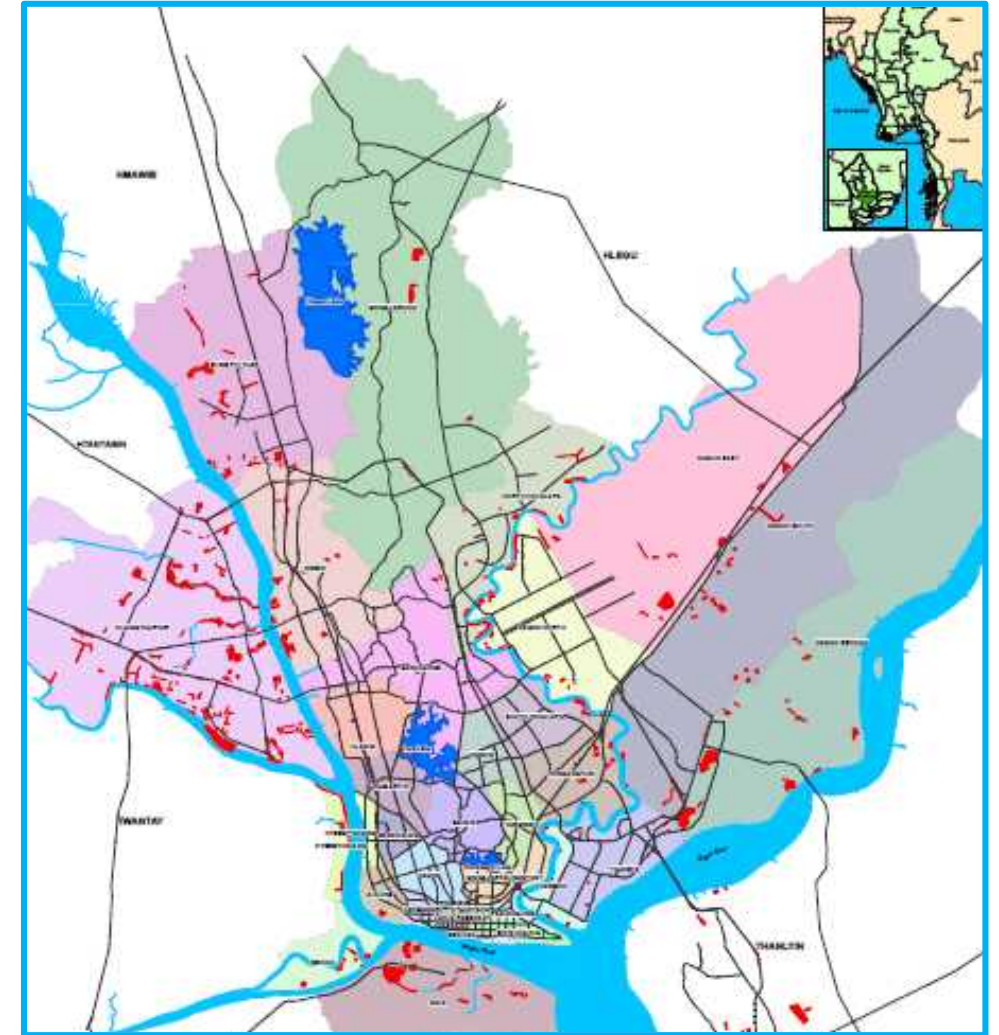


Fig. 1.2 Total COVID-19 laboratory confirmed cases in Yangon (Cumulative 23 March – 2 Dec 2020)
Source: Ministry of Health and Sports

COVID 19 OUTBREAK PATTERN IN MYANMAR

- ❑ Yangon has 423 pockets of informal settlements, mapped in 2016, 85000 HH 400000+ people
 - ❑ Densely Populated, Devoid of Basic Services,
 - ❑ prevention measures: Hand Washing, Use of Mask, Social Distancing, Home Quarantine, Isolation not a reality.
 - ❑ Risk of spread remains
- CPRP (Country Preparedness and Response Plan)
 - CERP (COVID 19 Economic Relief Plan)
 - SERF (Socio-Economic Response Framework)
 - SERP (Socio- Economic Recovery Plan)



UN-Habitat Myanmar- Response Measures

UN-Habitats Response Measures:

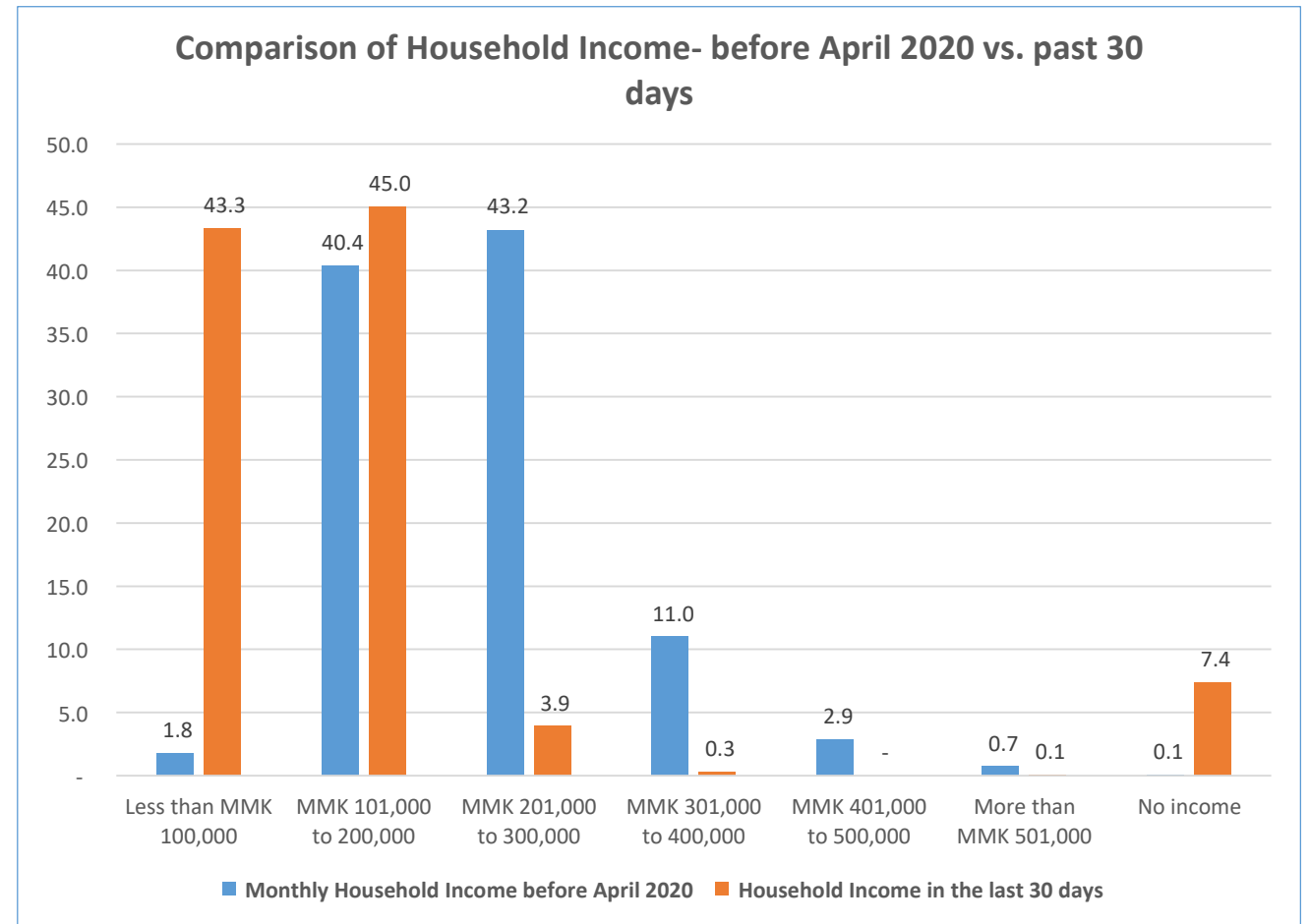
We have highlighted in our advocacy paper on housing released in May 2020, along with water and sanitation, **housing, is at the forefront of the battle against COVID-19.**

- **Awareness raising** and information dissemination
- **Expand access to water** through installation of water systems, hand washing stations
- **Supply of basic needs to vulnerable communities** including masks, soaps and sanitizers
- **Support Health facilities** isolation and quarantine facilities for those unable to quarantine or treat themselves at home.
- **And Importantly, ensure that no evictions take place during the period of the pandemic and thereafter.**



Differentiated Impact on Urban Poor: Steep Fall in Household Income

- Survey sample: **1680 households** residing in **informal settlements**
- Survey conducted in **7 townships** with the highest concentration of residents in informal settlements
- Before the pandemic, **1.8%** of households earned **less than USD 76 (100,000 MMK)**. In the past 30 days, **43.3%** of households have earned **less than USD 76**
- Before the pandemic, **43.2% of households** earned **USD 152- 228**. In the past 30 days, **only 3.9% of households** have earned a similar amount
- **7.4% of households** reported **no income** in the past 30 days

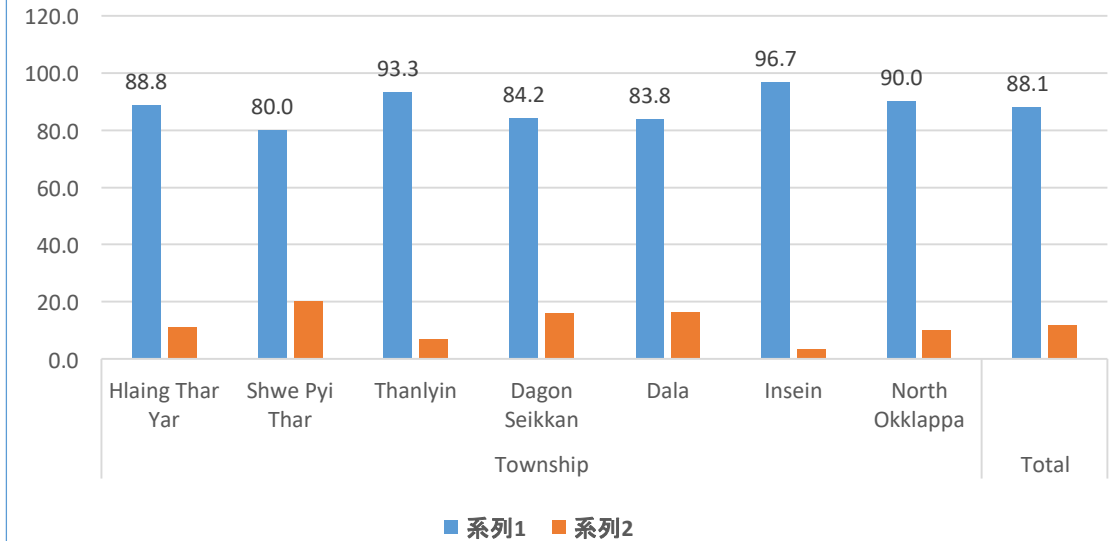


Pervasive Job Loss

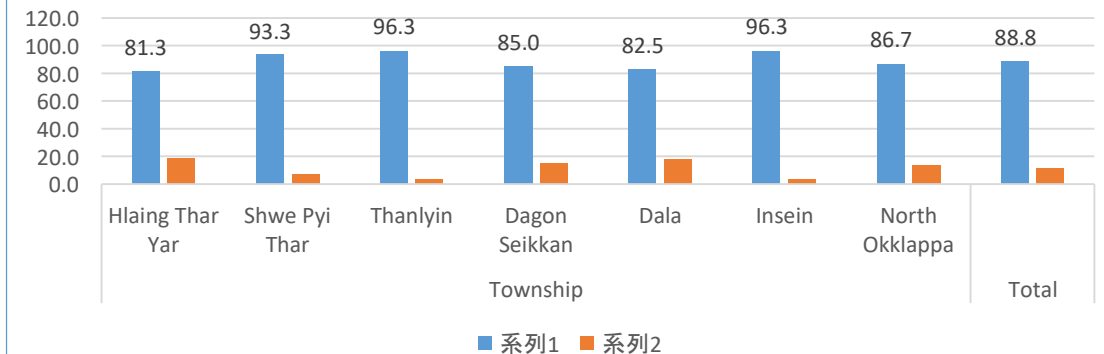
- In the past 90 days, **88.1% of all households** in the sample reported **at least one member losing their job**.
- In April 2020, UN-Habitat's rapid assessment revealed that **81% of the households in informal settlements** have at least one member who lost their job in the past 30 days.

- **69.3% of households** reported not feeling secure from evictions.
- **89% of households** are worried about running out of food before earning money to buy more.

Have any household members lost their jobs in the past 90 days?

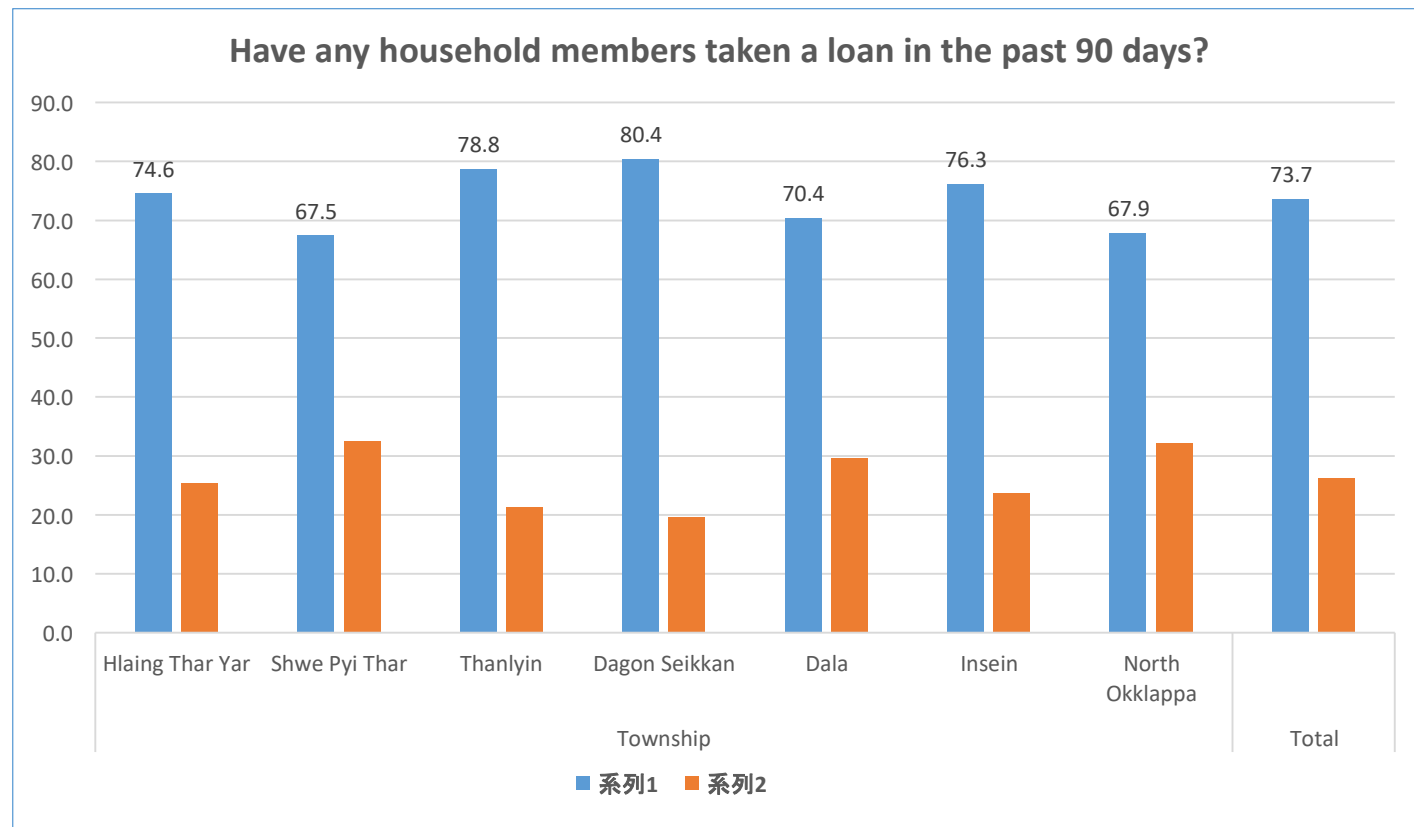


Are you worried that you will run out of food before having money to buy more?



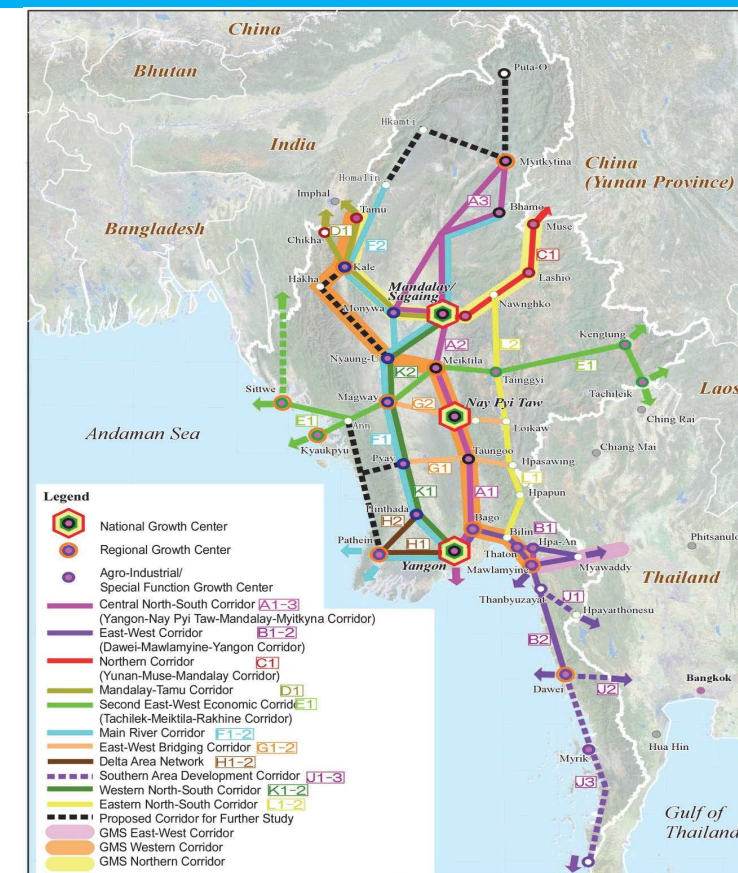
Alarming increase in Household Debt; Most households taking loans to buy food

- **73.7% of all households** in our sample reported **taking a loan in the past 90 days**.
- This varied from **80.4% in Dagon Seikkan** to **67.5% in Shwe Pyi Thar township**.
- Out of households who have taken a loan, **85% of households** reported taking **more than 1 loan in the past 90 days**.
- **73.4% of households** took out a loan to **purchase food**. Repayment of existing loans (**25.4%**) and health expenses (**19%**) were the other top reasons for borrowing.



Role of Spatial Planning after the Crisis

- ❑ Interventions at various levels
- ❑ Policy Level: National Urban Policy In its Final Stage of approval
 - ❑ Balance Spatial Development as one of the policy themes
 - ❑ Urban and Regional Development Planning Law
 - ❑ Establishing of the National Spatial Development framework which will involve the creation of efficient hierarchy of settlements,
- ❑ At City Level :
 - ❑ Planned City Extension
 - ❑ Urban In-fills
 - ❑ Application of Planning Principles
 - ❑ Public Space Right Density, Mixed Urban Use, Resilience, Energy sustainability
- ❑ At Operational Level
 - ❑ Road Map to solve the issue of Informal settlements
 - ❑ Opens up for Urban Upgrading
 - ❑ Selective resettlement plans
 - ❑ Setting aside space for low-cost housing in mixed development



UN-Habitat Plan to Protect Poor and Vulnerable in Informal Settlements

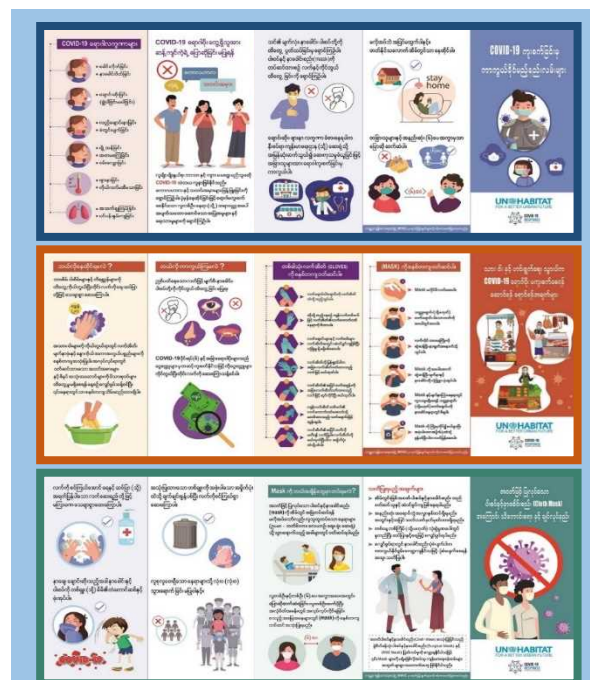
- ❑ New Project Go Japan Funding :
- ❑ 8 Townships: Hlaing Thar Yar, Dagon Seikkan, Dala, Shwe Pyi Thar, North Okkalapa, Thanlyin, Insein townships and South Dagon
- ❑ Target Beneficiaries: 25000 HH, 102500 people
 - ❑ 90 School; 76500 Students
- ❑ COMPONENT A: Enhancing access to safe water and improved environmental sanitation in informal settlements
- ❑ COMPONENT B: Improving solid waste management in informal settlements
- ❑ COMPONENT C: Improving hygiene awareness and capacity of communities in informal settlements
- ❑ 22 Water Supply Systems, HWS at communities and Schools SWM, Awareness, Information, Communications.



Informal settlements in Dala



Water Treatment Plant in Shwepyithar



Covid-19 IEC Materials



SWM project in Htein Bin



Hand-washing station in Shwepyithar

Thank you!

For more information, please visit

UN-Habitat Myanmar website: www.unhabitat.org.mm

Facebook: <https://www.facebook.com/UNHMyan/>