



REPUBLIC OF THE PHILIPPINES
NATIONAL ECONOMIC AND DEVELOPMENT AUTHORITY

The Role of Spatial Planning after the COVID-19 crisis in the Philippines

Third Spatial Planning Platform
Online Meeting

MERCEDITA A. SOMBILLA

Undersecretary, Regional Development Group

3 February 2021



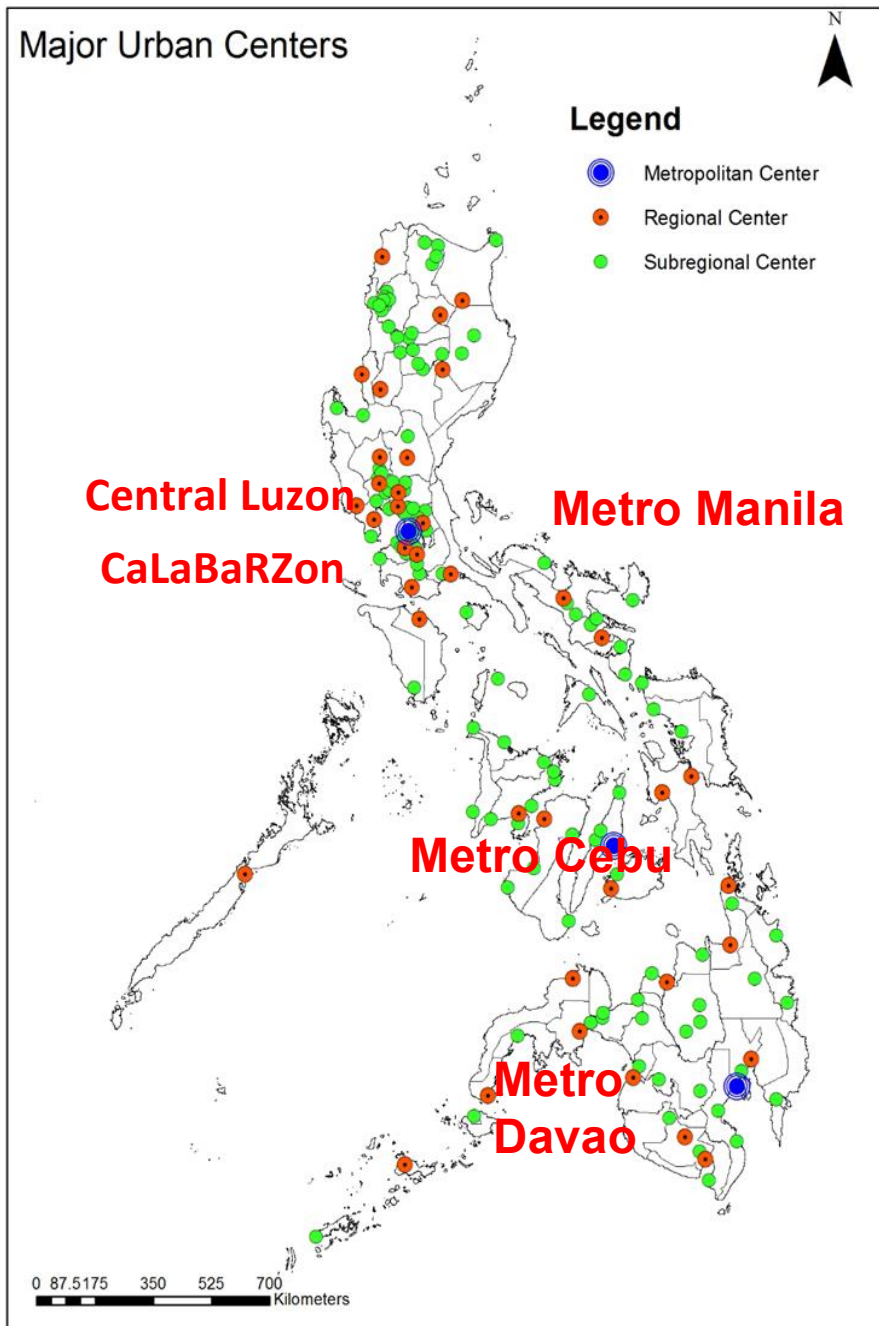
Presentation Outline

- I. Covid-19 Situationer
- II. Impacts of COVID-19 in the Philippines
- III. Response and recovery strategies
- IV. Spatial development strategies

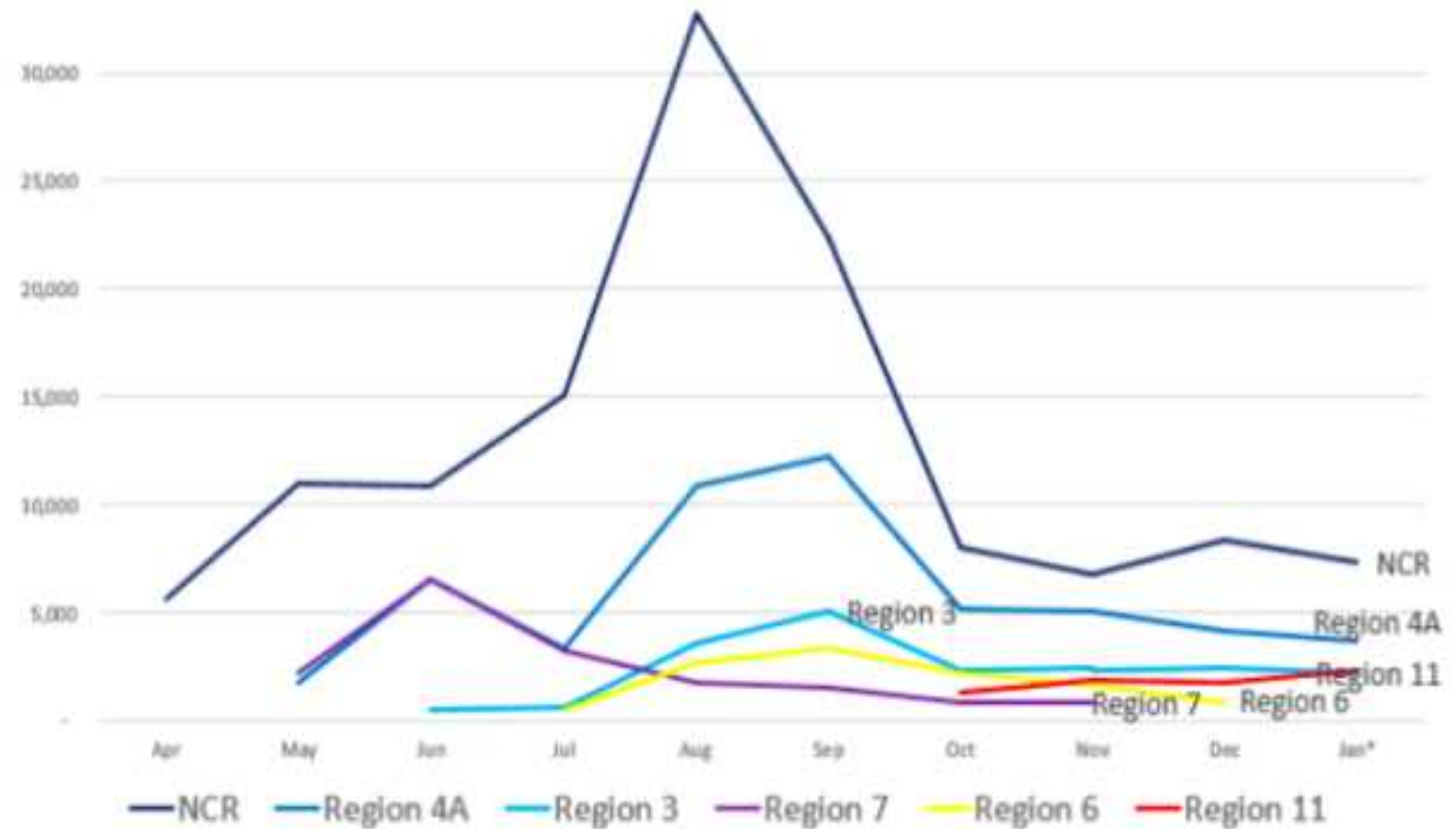
COVID-19 situation (as of January 2020)

Total PH cases	PH Active Cases
505,939	28,904
PH recovery	PH mortality
92.3% (466,993)	1.98% (10,042)

SOURCE: DOH NCOV tracker



Major cities and their neighboring areas have the most number of COVID-19 cases



Regions with the most number of cases
(April 2020- January 2021)

Impacts of COVID-19 on the Economy

GDP Growth contracted in 2020

Q1: -0.7 percent

Q2: -16.9 percent

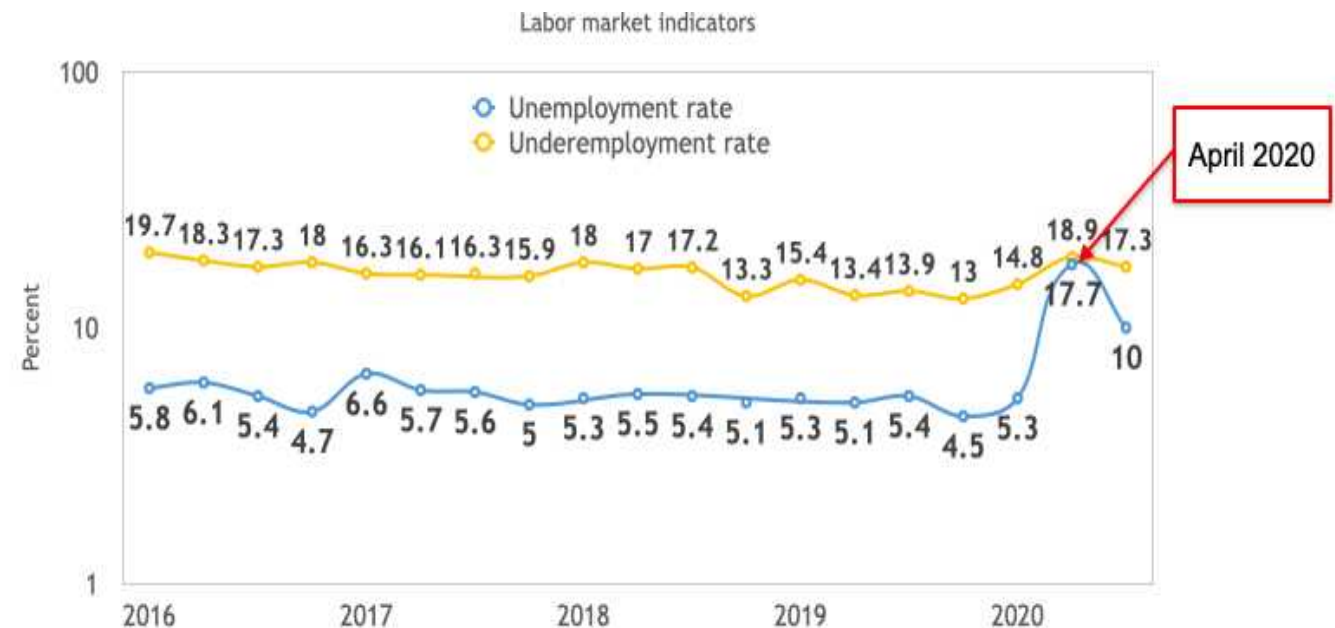
Q3: -11.5 percent

Q4: - 8.3 percent

GDP 2019: 6.0 percent

GDP 2020: - 9.5 percent

Unemployment rate increased due to closures and reduction in operations of businesses



Agriculture and
Fisheries



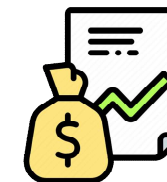
Industry



Education



Tourism



Trade



Banking

Impact COVID-19 in the Regions

Business survey results:

- 63% had issues on supply chain & logistics
- 43.5% had decline in revenues
- 13.03% of employees have been laid-off and w/ reduced working hours

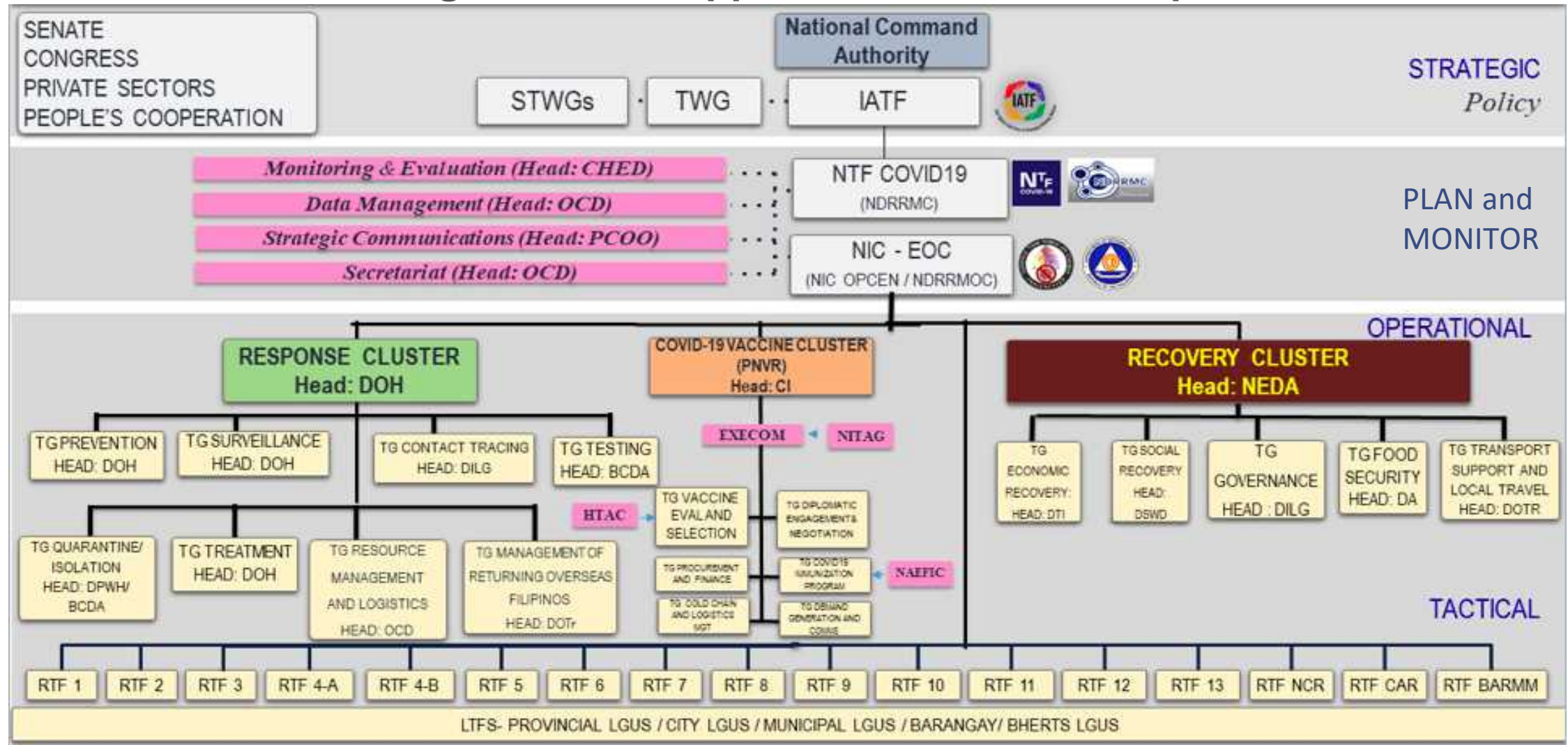
Notes:

1. Survey conducted from May 10-16, 2020.
2. The National Capital Region (NCR) and Bangsamoro Autonomous Region in Muslim Mindanao (BARMM) were not included in this survey.

Region	Experienced issues in supply chain and logistics operation (% of respondents)	Experienced decline in revenue (% of respondents)	Average decline in revenue (% decrease in sales)	% of employees that were laid-off and with reduced working hours
CAR	12	73.5	4	19.9
1	6	92.2	63	73.3
2	4	84.9	66	39.2
3	4	87.5	78	29.9
CALABARZON	16	68.6	69	28.7
MIMAROPA	2	85.7	65	63.2
5	10	87.6	69	39.7
6	6	87.2	38	4.0
7	8	92.0	40	28.8
8	-	96.5	85	-
9	2	83.3	63	1.8
10	4	89.2	54	16.3
11	13	72.2	49	44.5
12	4	78.3	68	59.3
Caraga	9	87.6	4	19.4

Response and Recovery Strategies

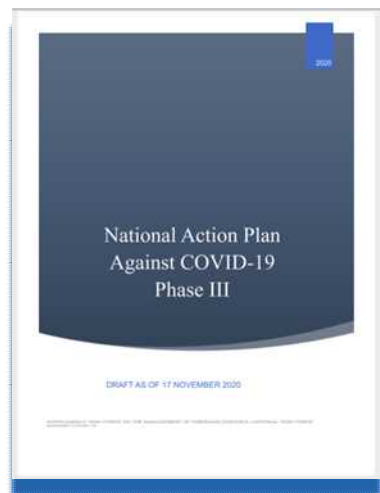
A whole-of-government approach to address the pandemic



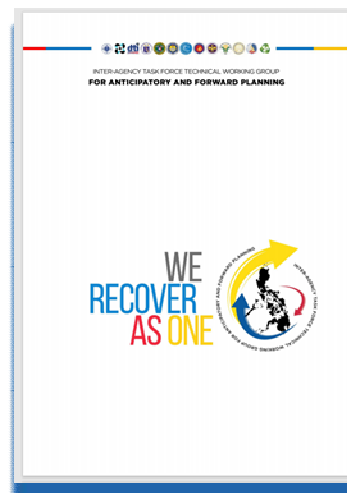
Phased and Adaptive Response and Recovery Approach

	EMERGENCY STAGE	RECOVERY STAGE	RESILIENCY STAGE
Period	March to May 2020	June to Dec 2020	2021 onwards
Law	Bayanihan I	Bayanihan II, GUIDE, FIST, CREATE	2021-22 GAA and other reform laws
Pillar	Pillar I and II	Pillar III and IV	Plan for a Healthy and Resilient PH
Key features	<ul style="list-style-type: none"> Budget and procurement flexibility. Subsidy to poor and low income. Small business support (grace period, wage subsidy) Support to key sectors (e.g. agri and OFW). Health system, capacity, and insurance. Support front-liners 	<ul style="list-style-type: none"> Budget and procurement flexibility Reprioritization of 2020 budget Priority BBB resumption Demand side to raise income and create jobs: better targeted and implemented Bayanihan I programs Supply side to support firms Targeted tax incentives 	<ul style="list-style-type: none"> Reprioritization of the 2021 and 2022 budget. Structural reforms to turn crisis into opportunity to prepare for the new normal. Support Balik Probinsya, Bagong Pag-asa (BP²) Program

Response and Recovery Strategies Towards Enhancing Resiliency



National Action Plan against COVID-19



We Recover as One



RECHARGE PH

A HEALTHY AND RESILIENT PHILIPPINES



Philippine Development Plan Mid-term update 2017-2022



Updated Regional Development Plans 2017-2022

PDP and RDPs pursue Spatial development strategies under the New Regime

1. Build on the efficiencies and maximize the benefits of scale and agglomeration economies
 - ✓ Decongest Metro Manila
 - ✓ Develop regional and sub-regional centers
2. Connect the settlements to form an efficient network
 - ✓ Improve linkages among settlements and key production areas by connecting rural areas to growth centers
3. Make vulnerability reduction an integral part of development
 - ✓ Reduce the risks of communities exposed to the threats of disasters: natural, health, human-induced
 - ✓ Specific DRR strategies formulated at the local levels



Thank you!



NATIONAL ECONOMIC AND DEVELOPMENT AUTHORITY

www.neda.gov.ph