



MINISTRY OF
CONSTRUCTION AND
URBAN DEVELOPMENT

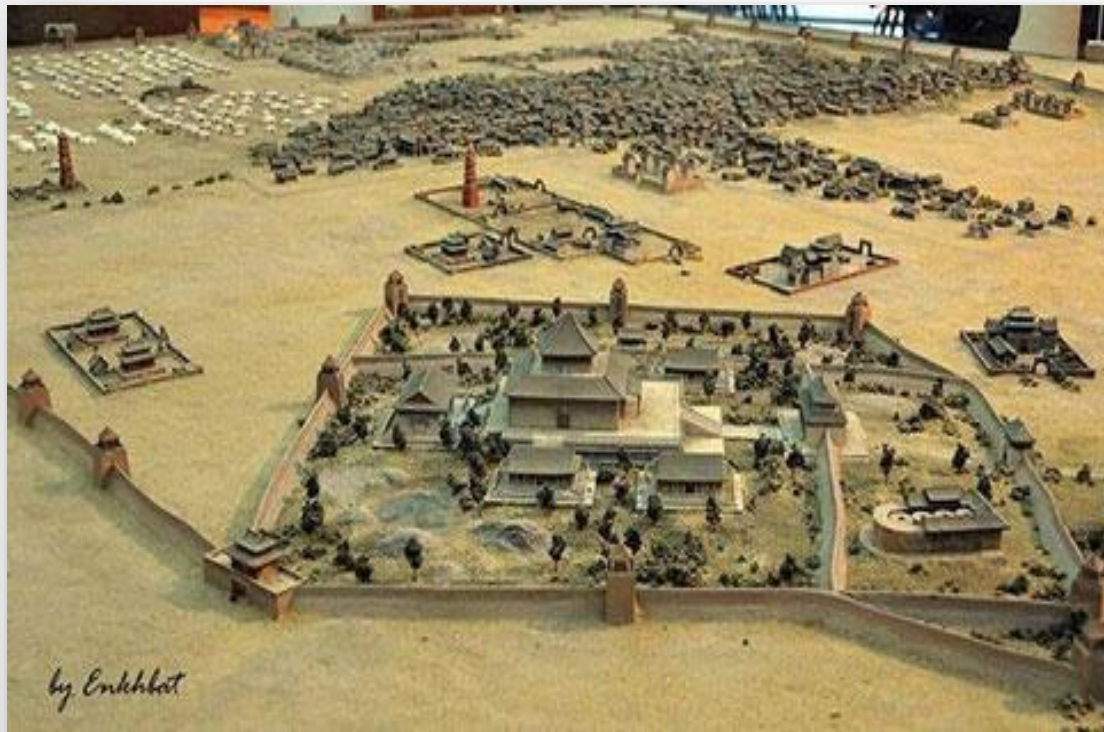
Mr. B.Gunbold

Director of Department of Urban Development and Land Affairs Coordination on Policy Implementation.
Ministry of Construction and Urban Development, Mongolia

Mongolian spatial planning

Fukuoka, 2018

One of the first Mongolian cities named Khar Khorum were established on 1220

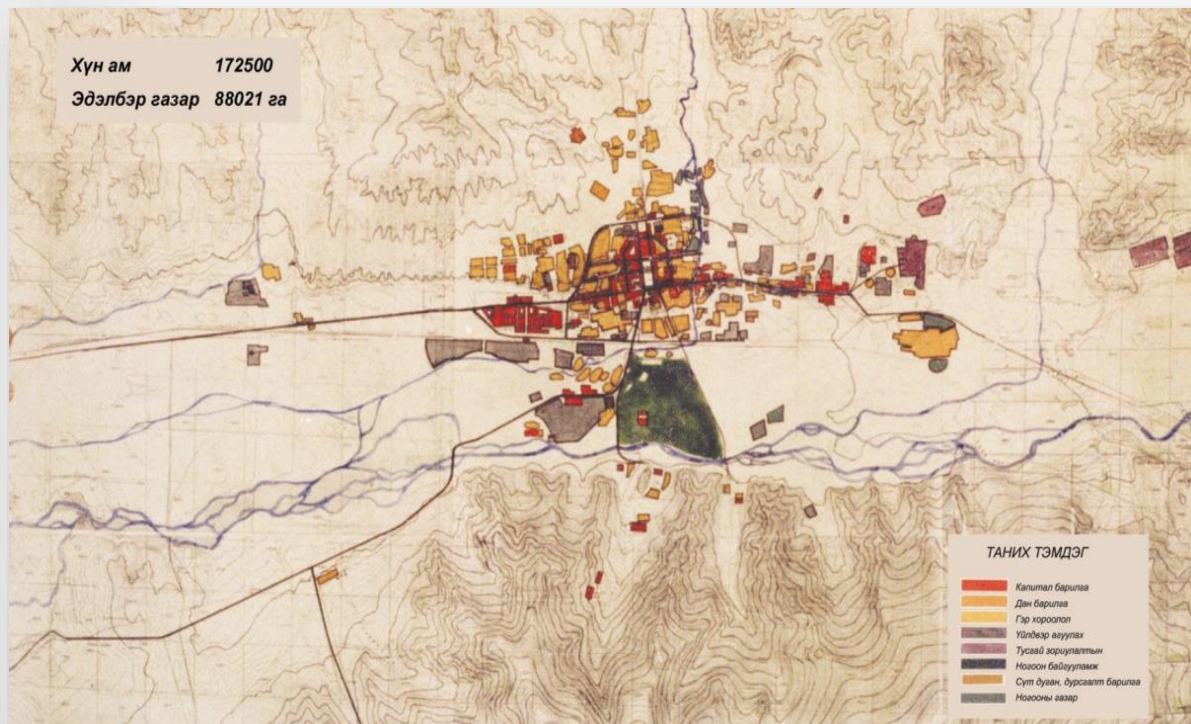


Ulaanbaatar, Mongolia 1940-1950s



Ulaanbaatar master plan

1954s



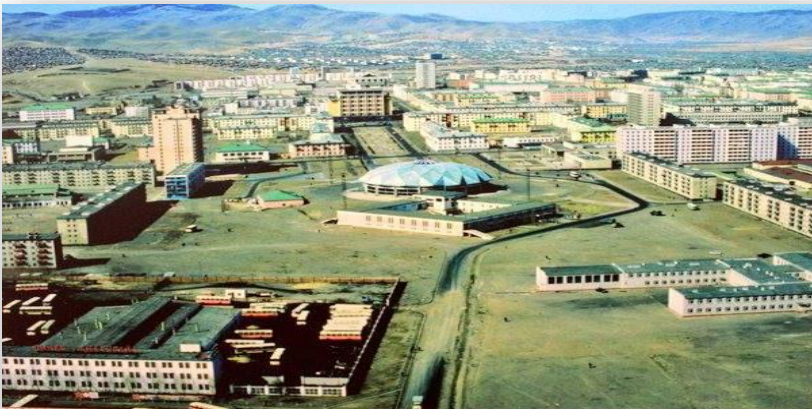
1975s



Ulaanbaatar, Mongolia 1960-1970s



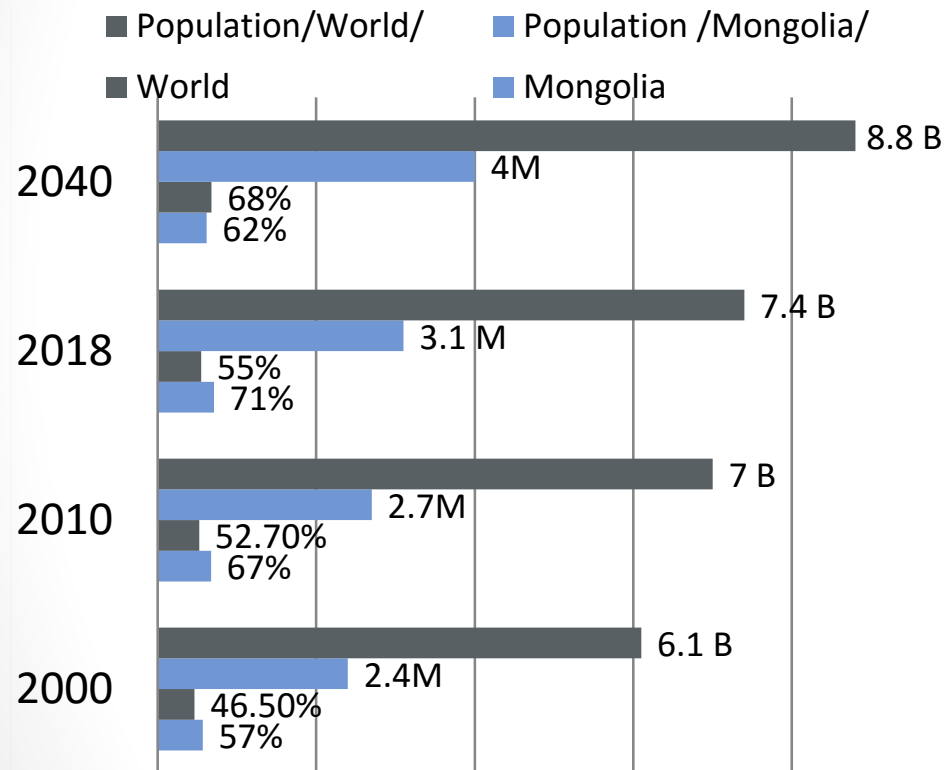
Ulaanbaatar, Mongolia 1980-1990s



Ulaanbaatar, Mongolia 2010s

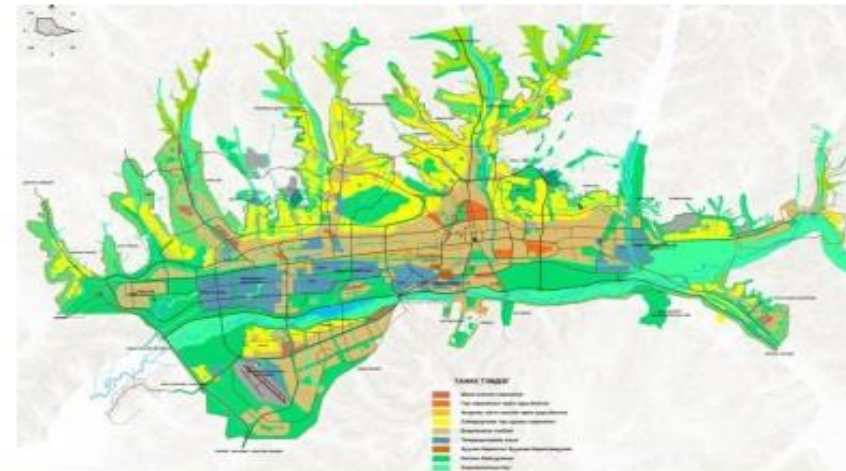


Nowadays more than 70 per cent of national population is concentrated in urban areas.



Ger areas: Urban population growths and lack of dwelling in urban areas lead to expansion of Ger districts or slum areas which is source of air and soil pollution.





Spatial Data Infrastructure

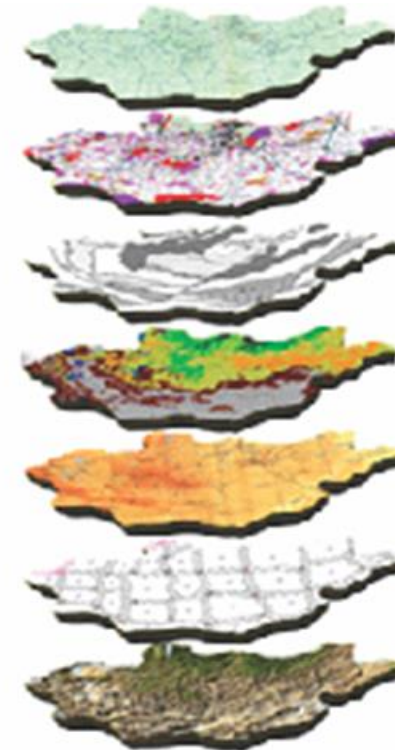
"... to establish the infrastructure of the national spatial information ...".
2.1.5 of the "Sustainable Development Concept of Mongolia-2030" approved by the Parliament of Mongolia in 2016 From the 5th goal of the Infrastructure Sector Development

2.85. Introduce spatial data and information to public use through full mapping and updating of the territory of Mongolia and creation of integrated geodetic network.

From the Government of Mongolia approved by the Parliament Resolution 45 of 2016
2016-2020 Action Program

2.81.11. The database of spatial data and information shall be digitized and used through geoportals.

From a Government Action Plan approved by the Government of Mongolia in December 121, 2016

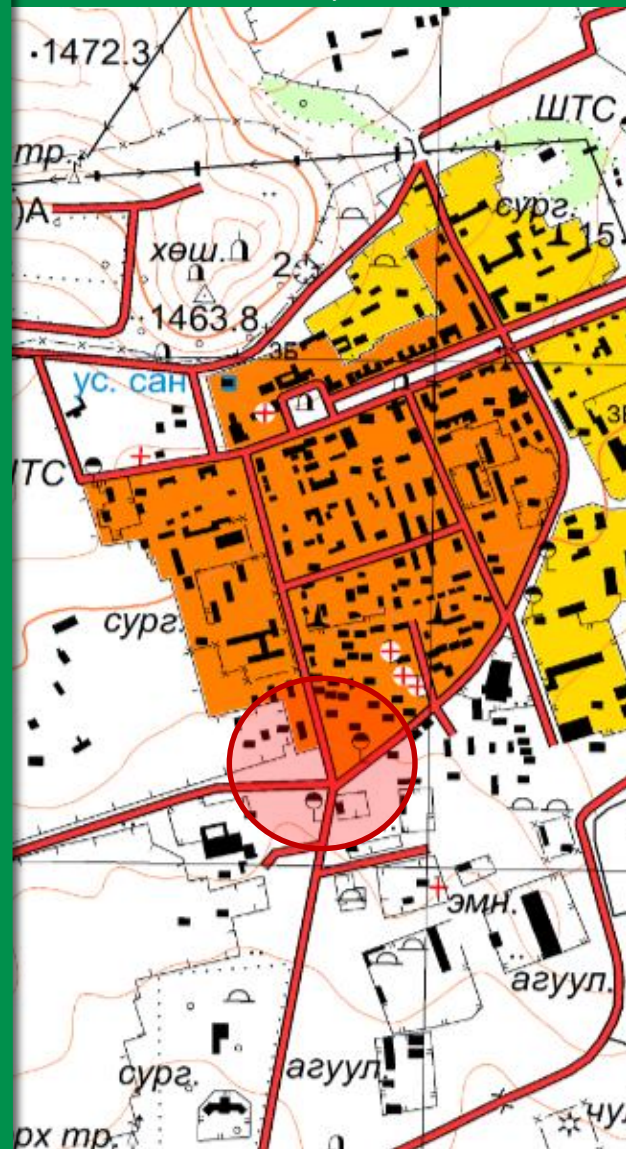


Topographic maps

1:100,000



1:25,000



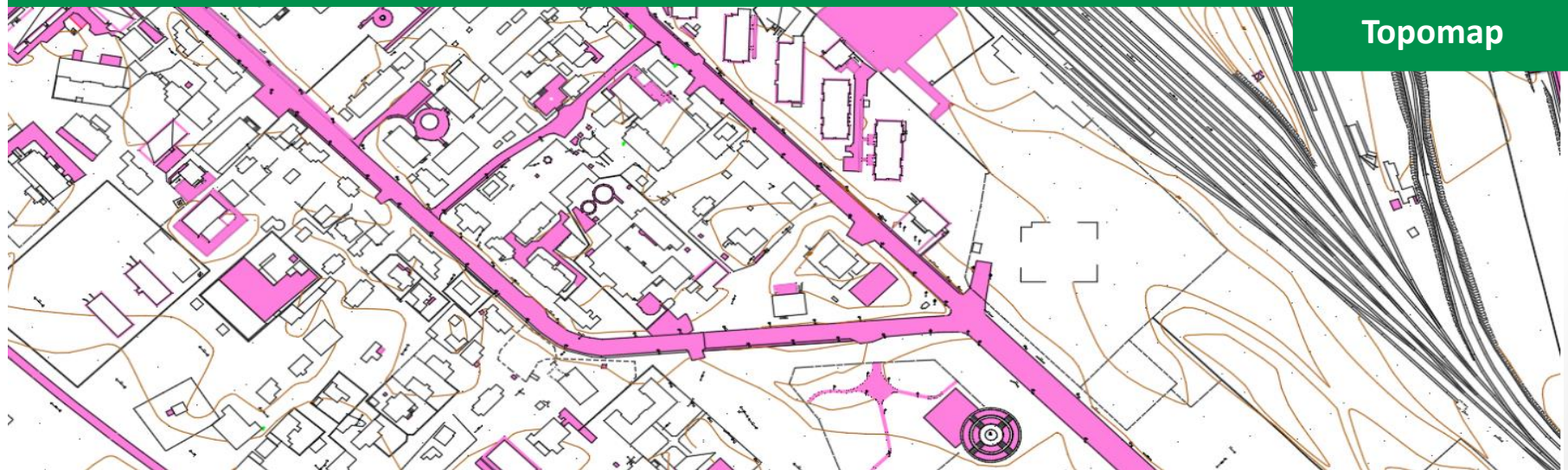
1:1,000



Topographic maps and geospatial features are updated using aerial and satellite imagery

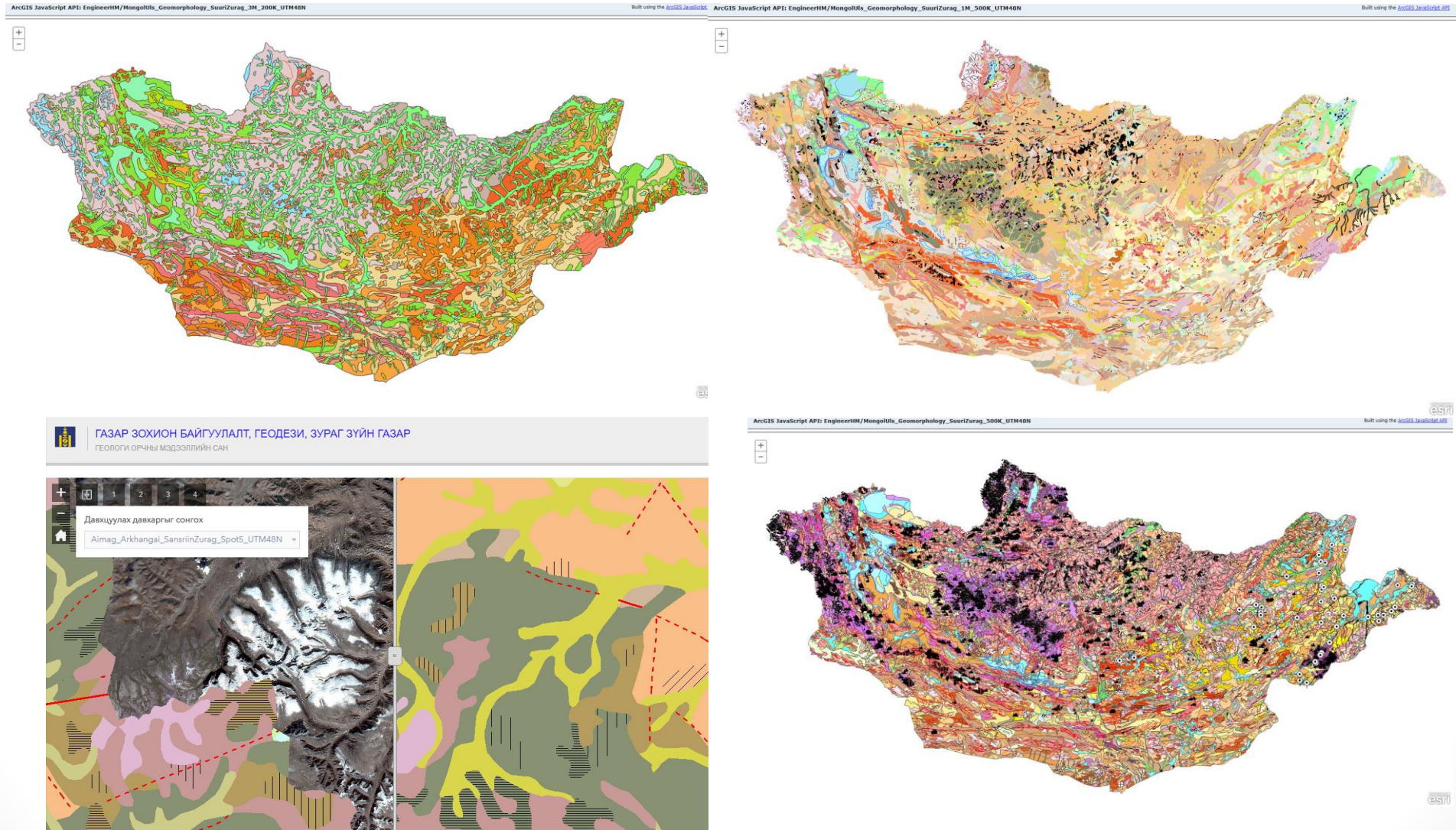


Satellite data

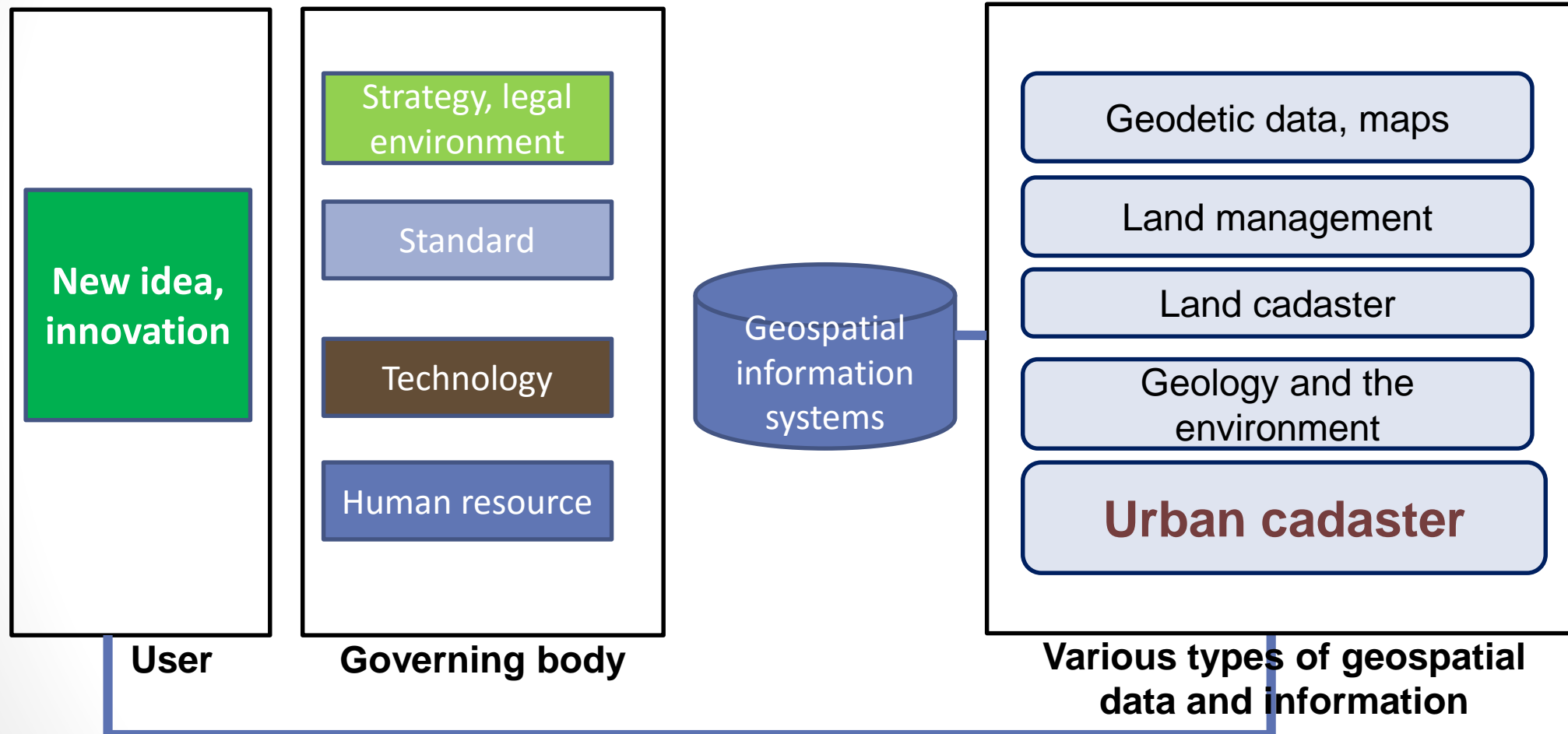


Topomaps

Thematic maps are delivered to the users via geoportal

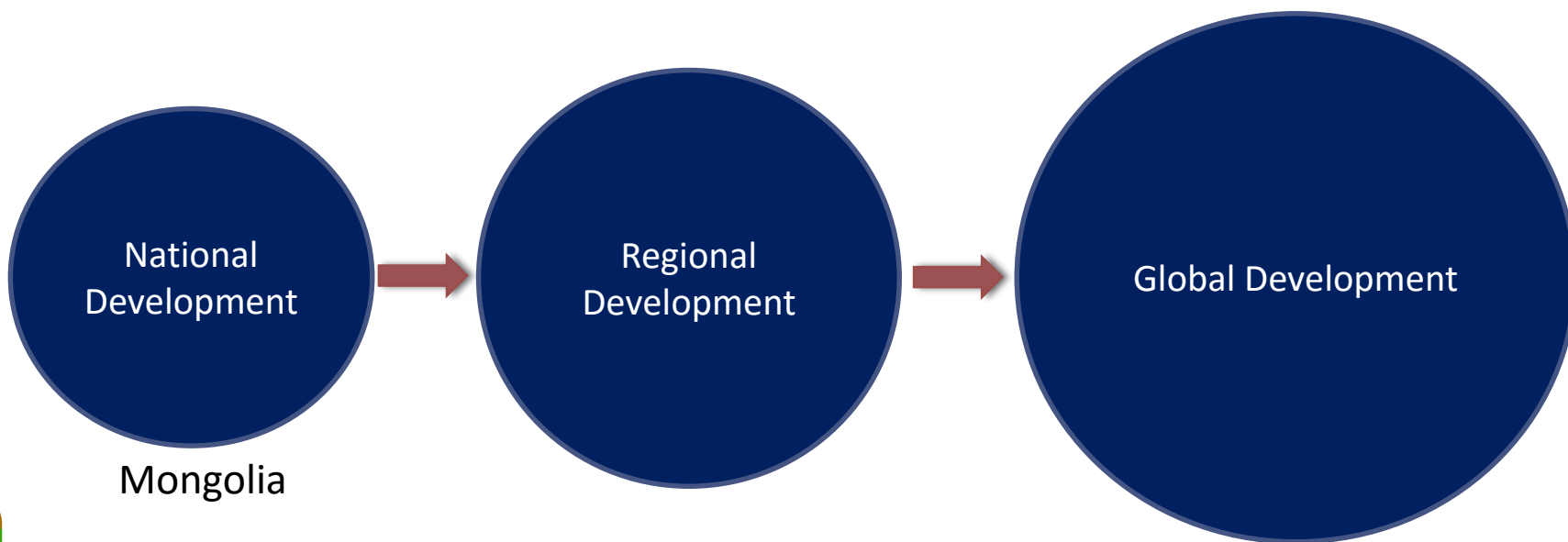
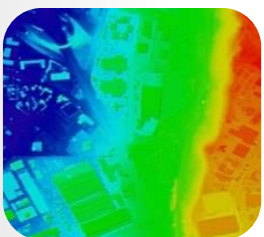


SPATIAL DATA INFRASTRUCTURE components

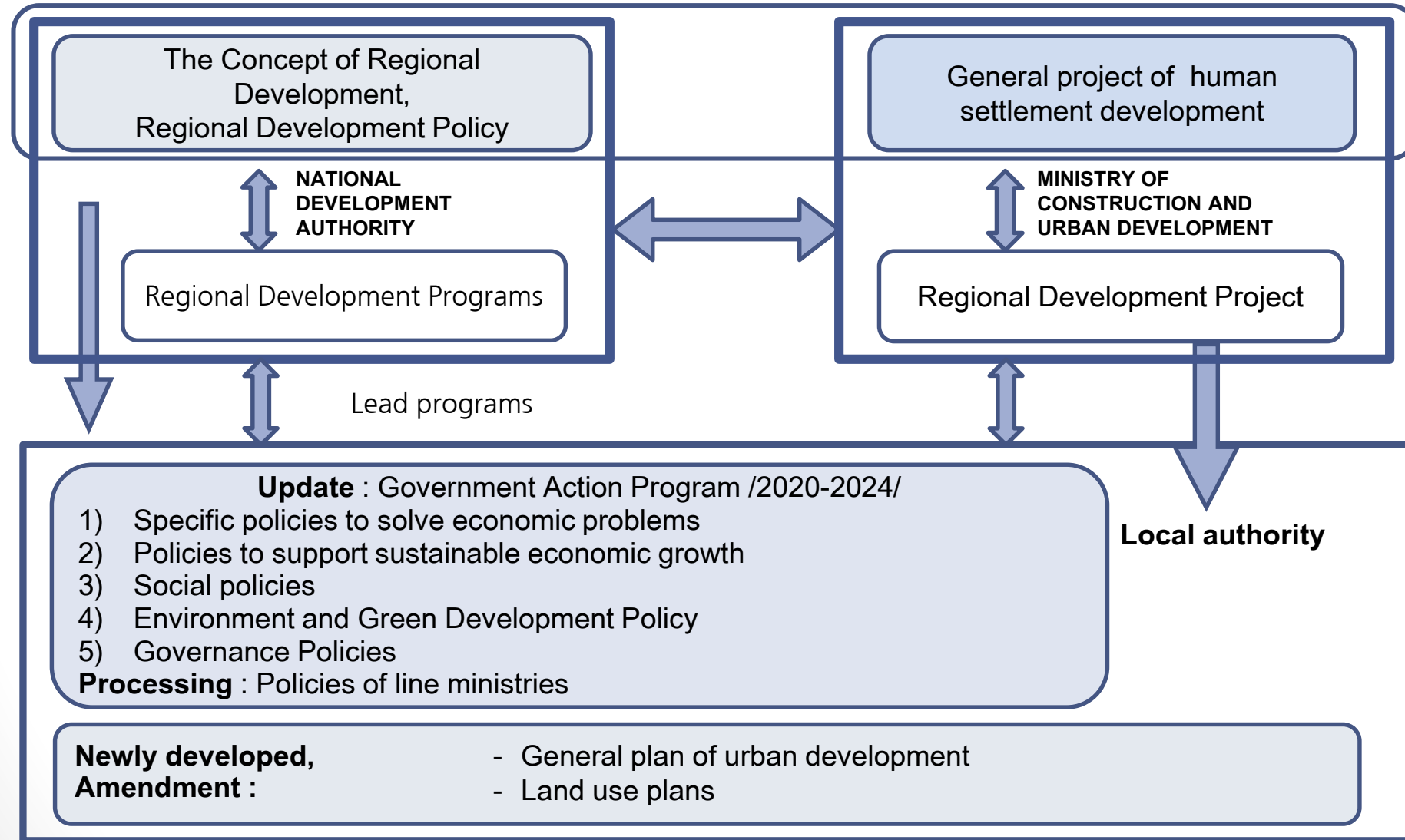




MINISTRY OF
CONSTRUCTION AND
URBAN DEVELOPMENT



"National development general plan under SDG-2030"



“NATIONAL HUMAN SETTLEMENT AND DEVELOPMENT GENERAL PROJECT”

Purpose:

- To determine the appropriate territories and zoning for human settlements based on socio-economic development, living standard, natural resources and climatic change, and to define mega city and planned city extension;
- To plan the development of comprehensive infrastructure sector such as roads, transportation, communication and energy;
- To evaluate on urban planning for defining sustainable development;
- To define tourism, historical and cultural issues and challenges in accordance with population and urban development policy.





MINISTRY OF
CONSTRUCTION AND
URBAN DEVELOPMENT

Thank you very much



SDI related activities- welcome to

The Forum on “the Importance and Role of National Spatial Data Infrastructure towards Sustainable Development Goals”

- Ulaanbaatar, Mongolia
6-7 September 2018

The Forum aims to strengthen understanding, knowledge and significance of national spatial data infrastructure to tackle national, regional and global challenges, and to achieve the sustainable development goals (SDGs) among Mongolian Government stakeholders by delivering the experience and best practices of other countries and the recommendations from geospatial experts.

We would like to invite you to the Forum as one of the distinguished speakers for a 20-25 minute presentation on policy and legal aspect of geospatial information management, institutional arrangements, or integration of geospatial information and statistics.

