



ACHIEVING SUSTAINABLE DEVELOPMENT AGENDA : Malaysian Spatial Planning Initiative

PLAN Malaysia
(JABATAN PERANCANGAN BANDAR DAN DESA)

Alias bin Rameli
Director, Research and Development
Division, PLAN Malaysia



**SPATIAL PLANNING PLATFORM (SPP) SIDE EVENT | IMPLEMENTING TERRITORIAL/SPATIAL PLANNING SYSTEMS AND
STRENGTHENING LOCAL CAPACITIES TO ACHIEVE SDGS & NUA**

10 February 2020 | Room 13 | Session Code : SE33



MALAYSIAN DEVELOPMENT PLANNING FRAMEWORK

KLCC, Kuala Lumpur
MALAYSIA

SPATIAL PLANNING FRAMEWORK

Planning Governance

FEDERAL

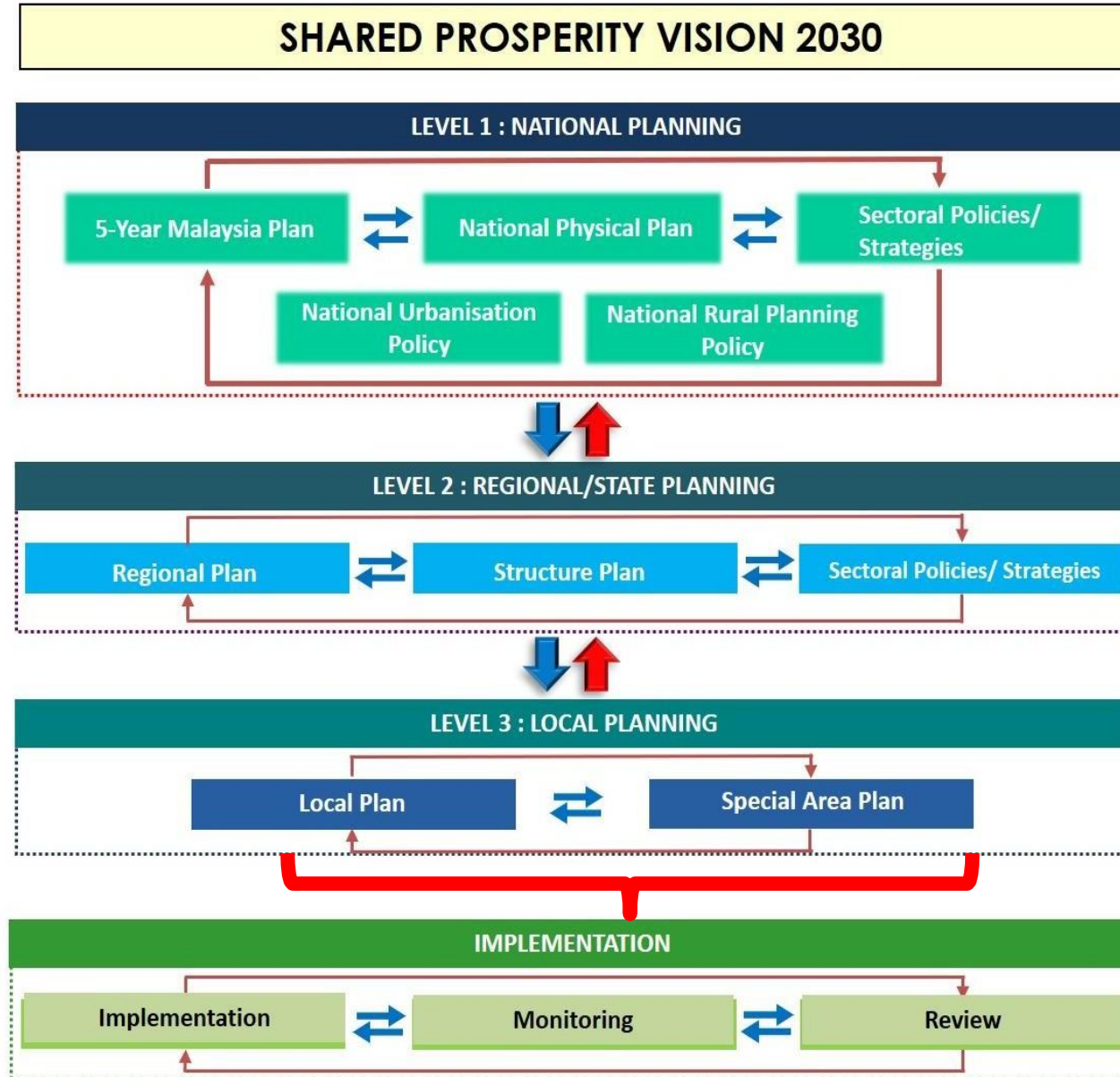
- **MINISTRY OF FEDERAL TERRITORIES**
- PLANMalaysia
- Federal Department and Agencies

REGIONAL / STATE

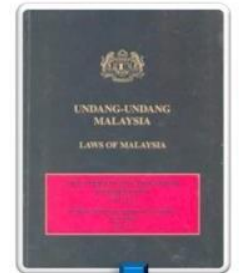
- **STATE GOVERNMENT**
- PLANMalaysia@States -12 States in Peninsular Malaysia

LOCAL

- **LOCAL AUTHORITIES**
(100 Local Authorities in Peninsular Malaysia, including Federal Territories of Kuala Lumpur and Putrajaya)



Legal Provision



Town Planning - Concurrent List

- Sec. 6B(2)(b)**
- National Urbanisation Policy (NUP)
 - National Rural Physical Planning Policy
 - National Physical Plan for Coastal Zones

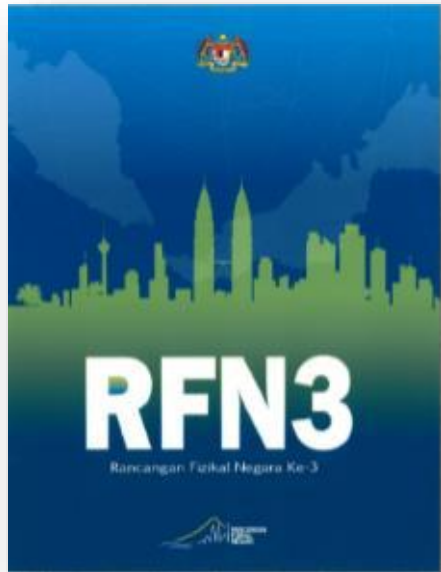
- Paragraph 6A(5)(b)**
- Central Forest Spine Action Plan
- Sec. 7-11**
- Structure Plan

- Sec. 12-16A**
- Local Plan
- Sec. 16B**
- Special Area Plan

- Every level must implement, monitor and review :
 - **Flexibility**
 - **Effectiveness**

■ National Physical Plan | NPP 3

NPP3



REVIEWED EVERY
5 YEARS

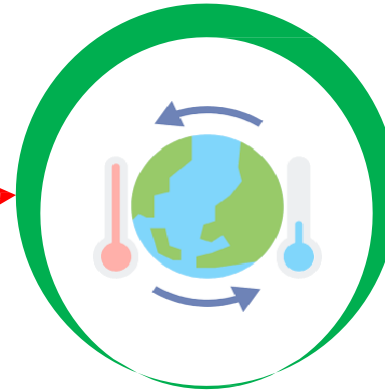
GOAL

**Achieving
a resilient
and
liveable
nation**



THRUST 1

Dynamic Urban And Rural Growth



THRUST 2

Spatial Sustainability And Resilience To Climate Change



THRUST 3

Building Inclusive And Liveable Communities

GROWTH

LIVEABILITY

SUSTAINABILITY

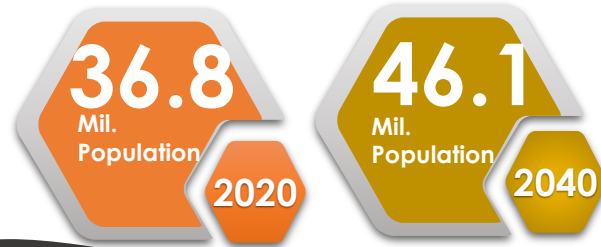
RESILIENCY

2040

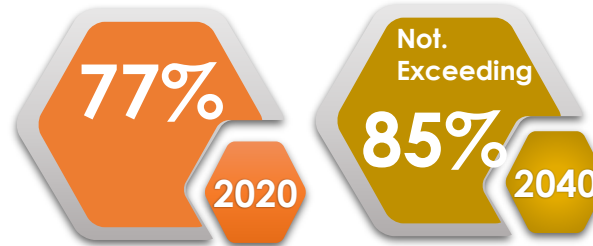
■ Development Targets in NPP3 | for 2020-2040

POPULATION & URBANISATION

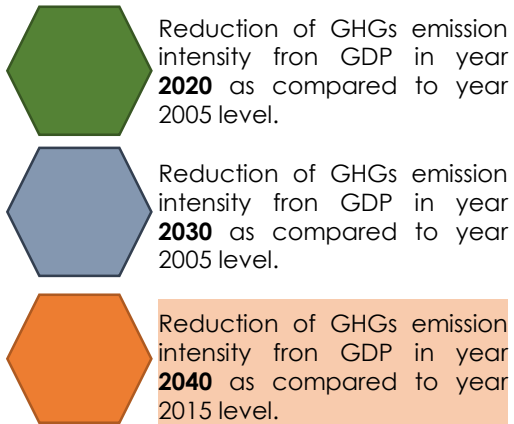
Population Target



Urbanisation Target

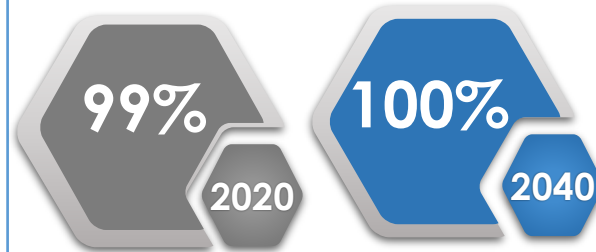


Carbon Dioxide Emission Target



Infrastructure Development Performance Achievement target

Clean and Treated Water Coverage



Public Transportation target

2020 2040

Peninsular Malaysia	30%	50%
Kuala Lumpur	40%	70%
Putrajaya/Cyberjaya	30%	60%
Johor Bahru	30%	60%
George Town	30%	50%
Kuantan	30%	50%
Sabah & Federal Territory of Labuan		
Kota Kinabalu	15%	40%
Labuan	15%	40%

■ National Urbanisation Policy | NUP2

NUP2

VISION

“SUSTAINABLE CITIES FOR PEOPLE’S WELL-BEING”

PRINCIPLE 1



**GOOD URBAN
GOVERNANCE**

PRINCIPLE 2



LIVABLE

PRINCIPLE 3



COMPETITIVE

PRINCIPLE 4

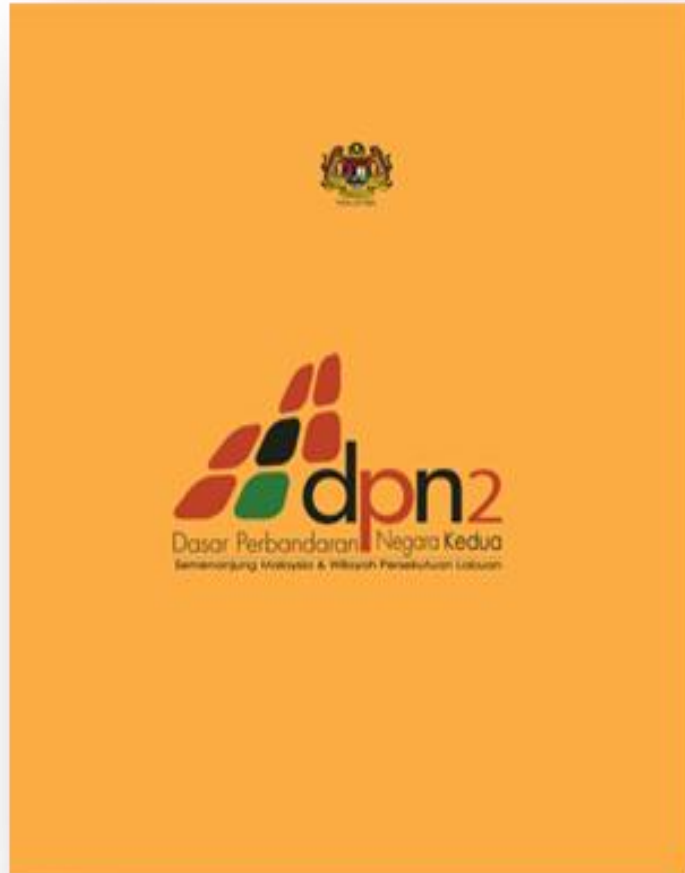


**INCLUSIVE AND
EQUITABLE**

PRINCIPLE 5



**GREEN
DEVELOPMENT AND
CLEAN
ENVIRONMENT**



2016-2025

| SPATIAL PLANNING INITIATIVE (Planning Tools)

Planning Legislations & Capacity Building



- Town and Country Planning Act, 1976
- National Physical Planning Council (Chaired by PM)
- State Planning Committee (SPC)
- Planning Appeal Board

PLANNING RESEARCH AND GUIDELINES



- 37 Planning Guidelines
- Youth City
- Smart City
- Safe City
- Affordable Housing etc.

Regional & Territorial Planning



- 3 Regional Planning Committee
- Central Forest Spine

National Development Plans



Development Plans



- 12 State Structure Plan
- 71 Local Plan
- Special Area Plan

PLANNING INFORMATION SYSTEM, DECISION SUPPORT SYSTEM TOWARDS BIG DATA

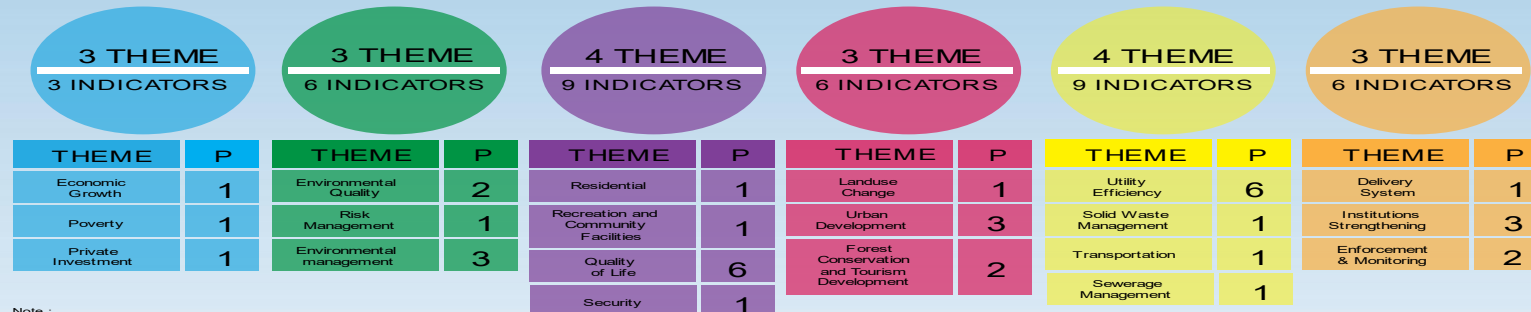


MUO



| URBAN SUSTAINABILITY ASSESSMENT

MURNInets 2.0 FRAMEWORK



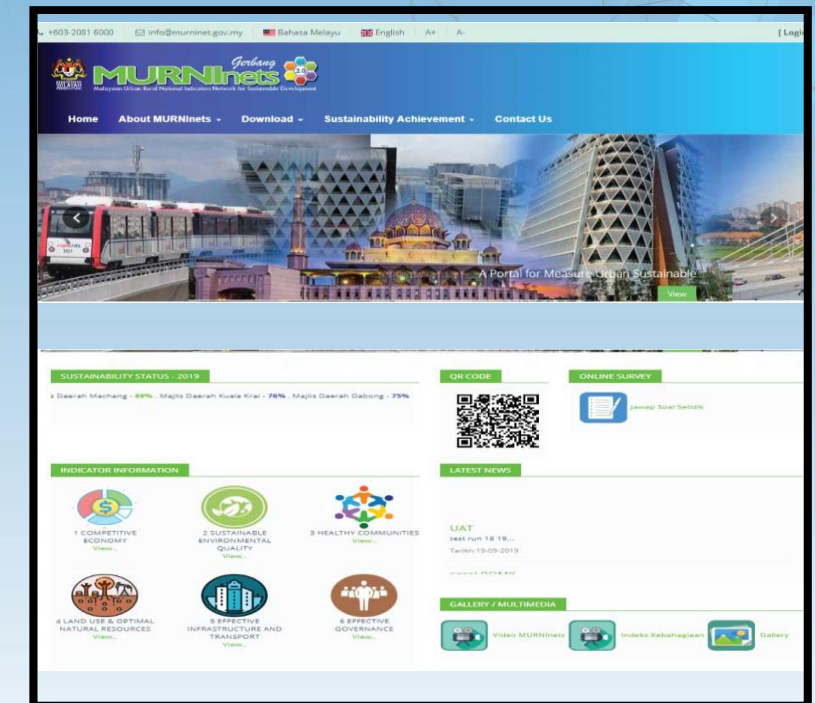
Note :
S STRATEGY
D DIMENSION
P INDICATORS

Malaysian Urban Rural National Indicators Network for Sustainable Development

■ PORTAL MURNInets 2.0

MURNInets 2.0

P O R T A L





B



SPATIAL PLANNING INITIATIVE AND SUSTAINABLE DEVELOPMENT AGENDA

|(1) Mapping of Existing Planning Initiatives to the SDGs



| (2) Mapping of MURNInets Indicators to SDGs (Example)



SDGs



MURNInets INDICATORS

- Broadband Penetration Rate

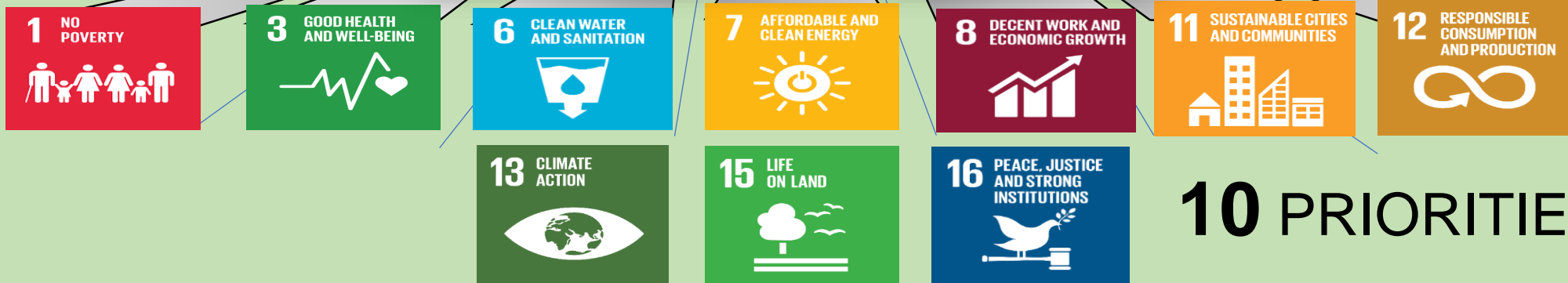
- Number of Disaster Risk Management and Implementation Initiative
- Number of Environmental Management Initiative
- Percentage of Affordable Housing Provided/State Target
- Percentage of Residential Land Use Within 400m from Public Facilities
- Ratio of Public Nuisance Complaint Cases/10000 population
- Happiness Index
- Percentage of Reduction in Crime Index
- Percentage of Changes in Non-Built up Area
- Urbanization Rate
- Ratio of Public Open Space / 1000 population
- Rate of Application for Open Space Gazzetment
- Conservation of Forest Reserve and Public Park
- Number of Integrated Public Transport Terminal/Stations

■ MURNInets | Malaysian Urban Rural National Indicators Network for Sustainable Development (39 indicators)

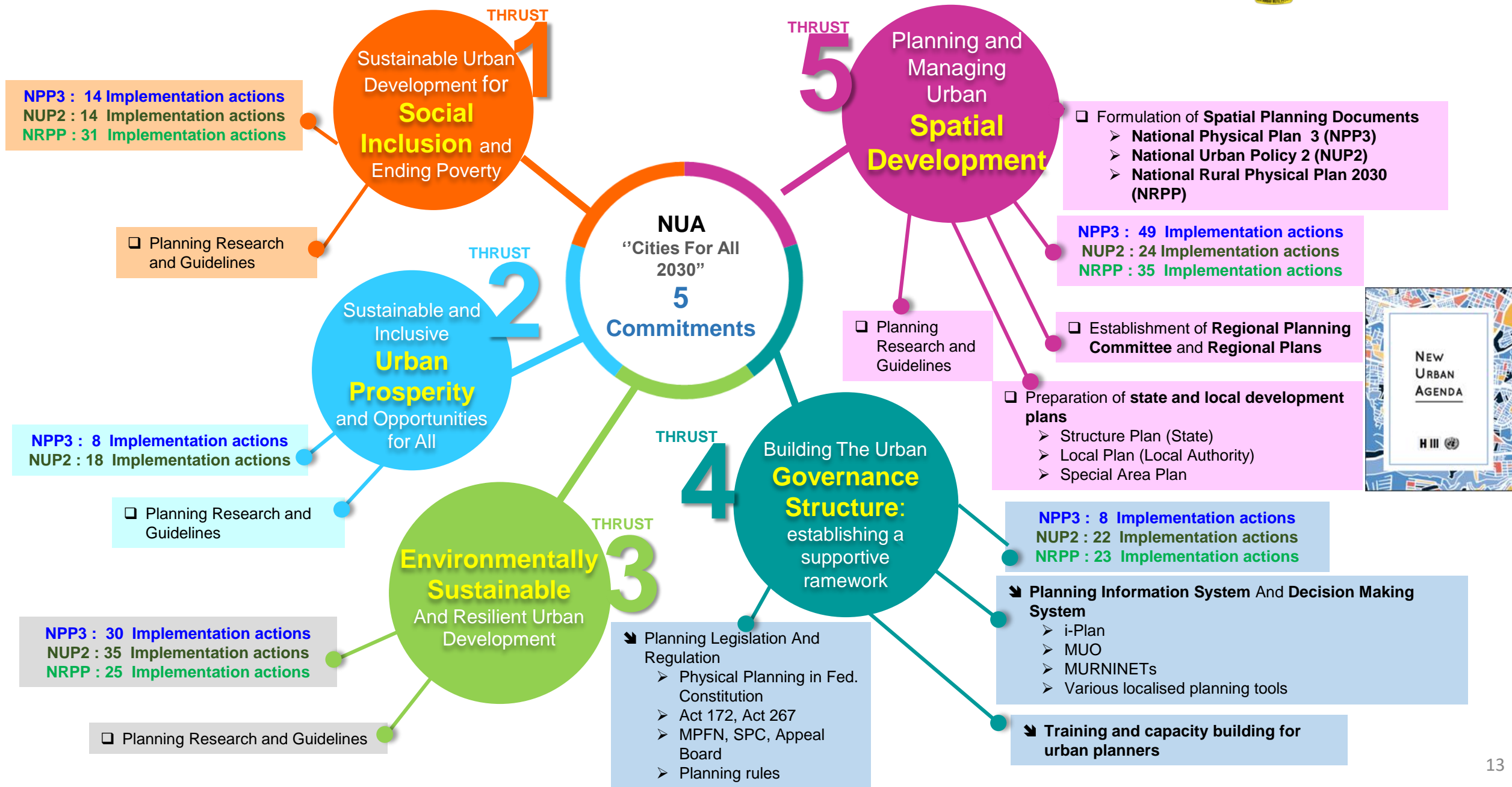
Priority SDGs based on Existing Selection Criteria



MURNInets
Malaysian Urban Rural National Indicators Network for Sustainable Development



(3) Translating of NUA in Spatial Planning





PROMOTING AND IMPLEMENTING THE SDGs AGENDA



Integrating Climate Change Mitigation Measures in Local Plan

Low Carbon City Planning Guidelines

City Layout and Design



Transport and utility



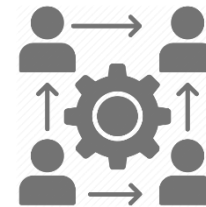
Urban Services and Waste Management



Environment and Green Technology



Governance



Mapping Disaster Risk



Identify type of hazard

1

2

Identify level of hazard risk



Evaluate resilience of
a city

3

4

Identify appropriate measures to reduce
vulnerability and increase cities' resiliency



Susceptibility Map



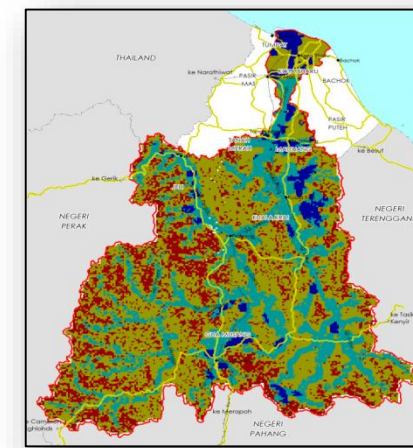
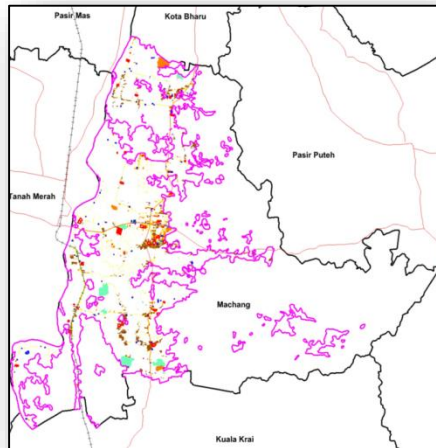
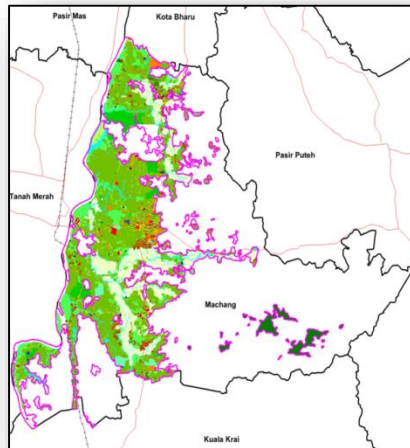
Vulnerability Map



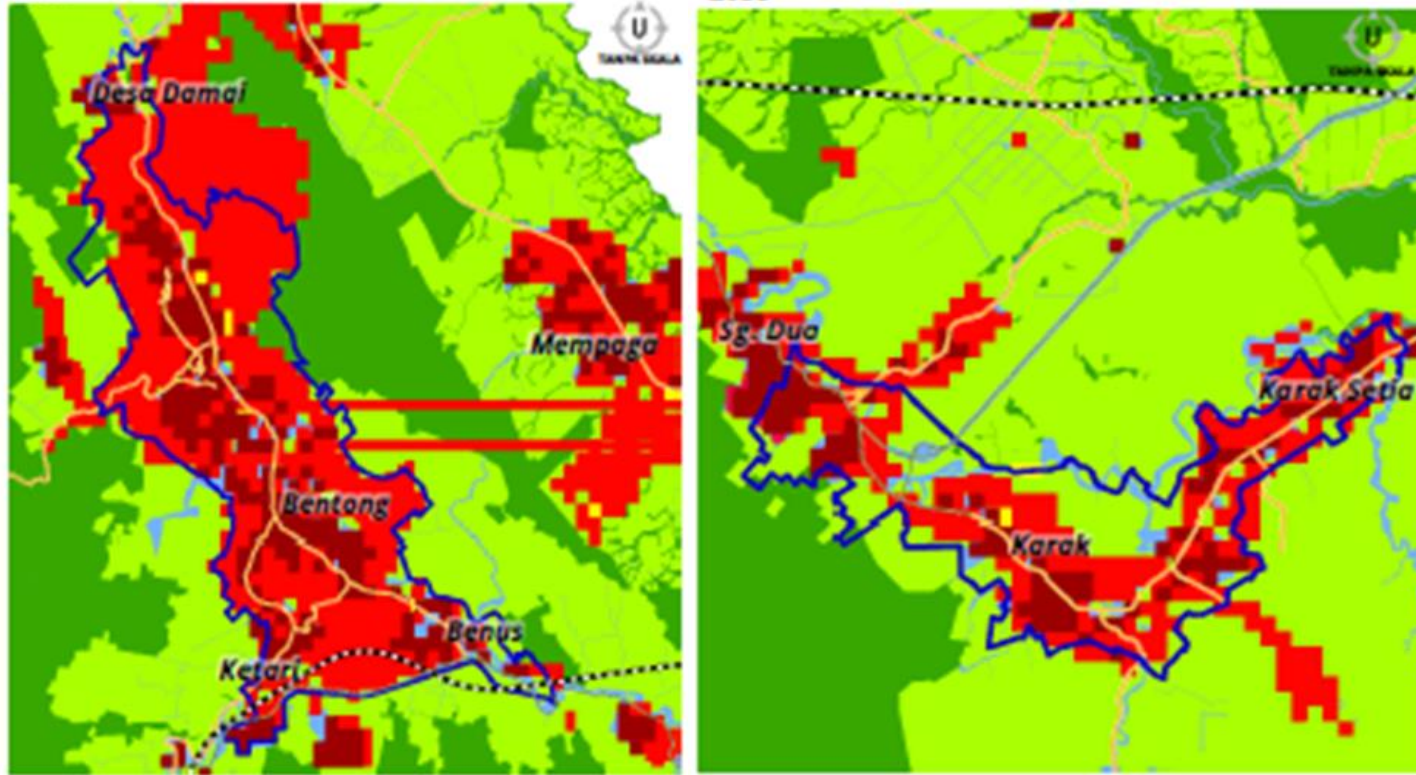
Hazard Map



Disaster Risk Map



URBAN GROWTH BOUNDARY



Bentong Draft Local Plan 2035

Benefits of Urban Growth Boundary :

- To **balance and sustain** physical, environment, economy and social components for future development.
- Smart and efficient control of urban sprawl.
- Managing and planning development of cities.



Criteria used in
determining Urban
Growth Boundary for
Bentong Local Plan

Built-up area

Committed
Development

Zoning

Public
Facilities

Density

Existing
Boundary

Accessibility

Topography

NATIONAL - LOCAL

| Maximizing development within walking distance of public transport.



Transit Oriented Development (TOD)



Promote **mixed development with high intensity** in walkable distance from station .



Promote **optimum and inclusive** land use and spaces



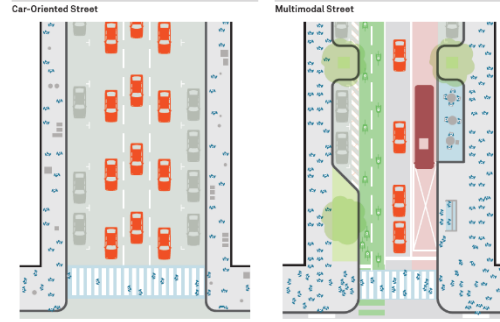
Centred on public transport – rail and buses .



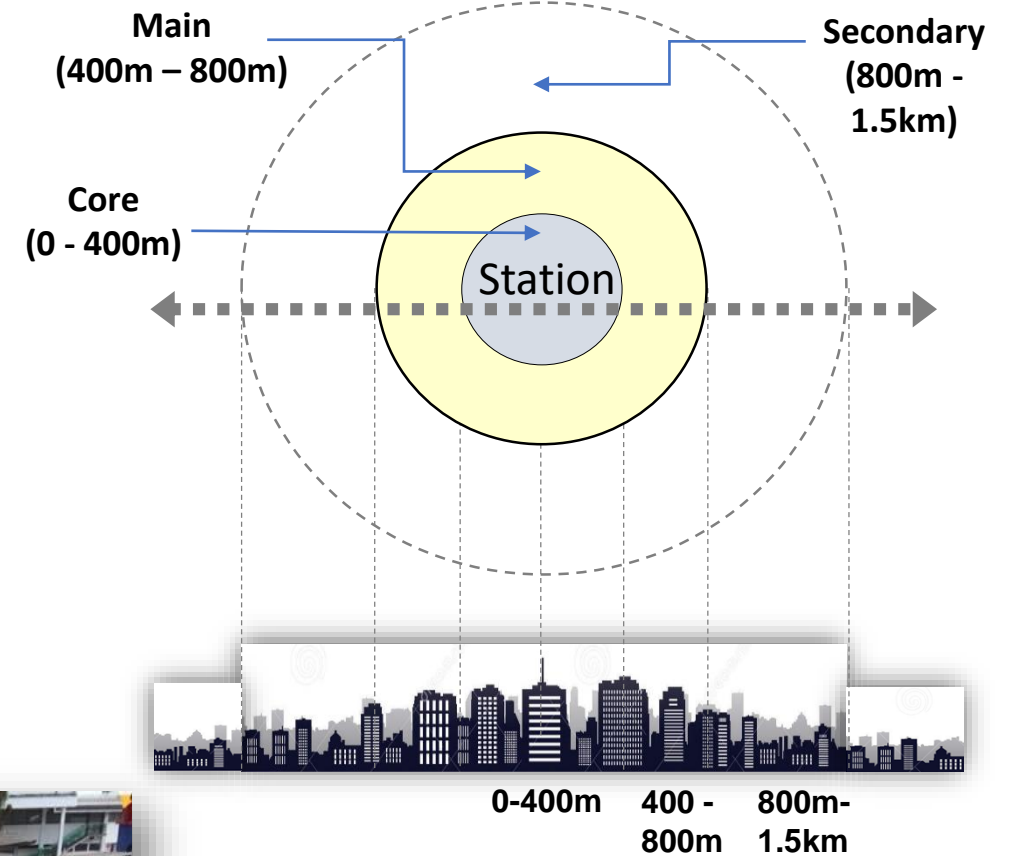
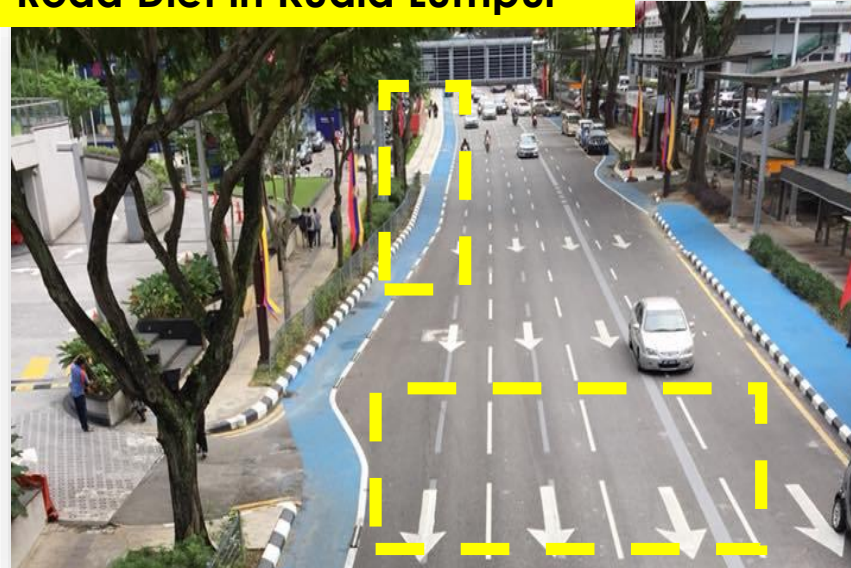
Promote **high connectivity, public transport friendly, pedestrian and cyclist**



Reduce carbon emission



Road Diet in Kuala Lumpur



Government Transformation Programme



PROGRAM AND INITIATIVE

- Introduced in 2004.
- Part of Government Transformation Programme under **NKRA Reducing Crime**.
- Consists of **3 strategies and 15 measures**.
- Implemented by local authorities with budget allocation from Federal Government.



N K R A
Reducing Crime



**BLACKSPOT
INITIATIVE**

**SAFE CITY MONITORING
SYSTEM**

CPTED

SAFE CITY IMPLEMENTATION | 2010-2019

17 PARTNERSHIPS
FOR THE GOALS



BLACKSPOT and CPTED Initiatives

**Fear of Crime
(FoC)**



**High Crime Case
(Hotspot)**



Lightings
24,844 units



CCTV
992 units



Pedestrian Walkways
385.65 km



Traffic Calming
385 units



Motorcycle Parking
44,061 units



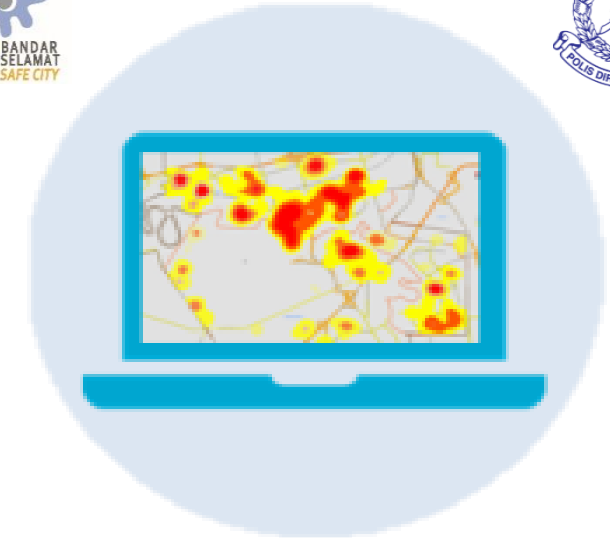
Crime Prevention Signage
2,211 units



Safety Mirrors
2810 units

Budget :
RM340.84million
(US\$95.00 mil.)

Safe City Monitoring System (SPBS)



Budget :
RM29.79million
(US\$8.00 mil.)

|Promoting and Implementing Green Neighbourhood Initiatives



2012

GARIS PANDUAN PERANCANGAN

GREEN NEIGHBOURHOOD

Guideline Purpose - To drive local authorities to support green lifestyle through the neighbourhood design that would reduce carbon emissions & improve the quality of life and well-being.

Yearly Awards : To appreciate the community's efforts in implementing the green neighbourhood initiatives.



Provision of Bicycle Lane



Rain Water Harvesting



Provision of Pedestrian Walkway



Composting



Community Gardening



Other Initiatives

HEALTHY WALKABLE CITY

Site 1: Kuala Terengganu (1.15km)

3 GOOD HEALTH AND WELL-BEING



11 SUSTAINABLE CITIES AND COMMUNITIES



PHASE I

PHASE II

• BEFORE

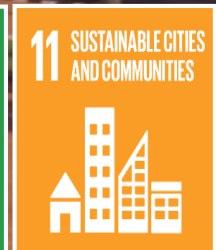
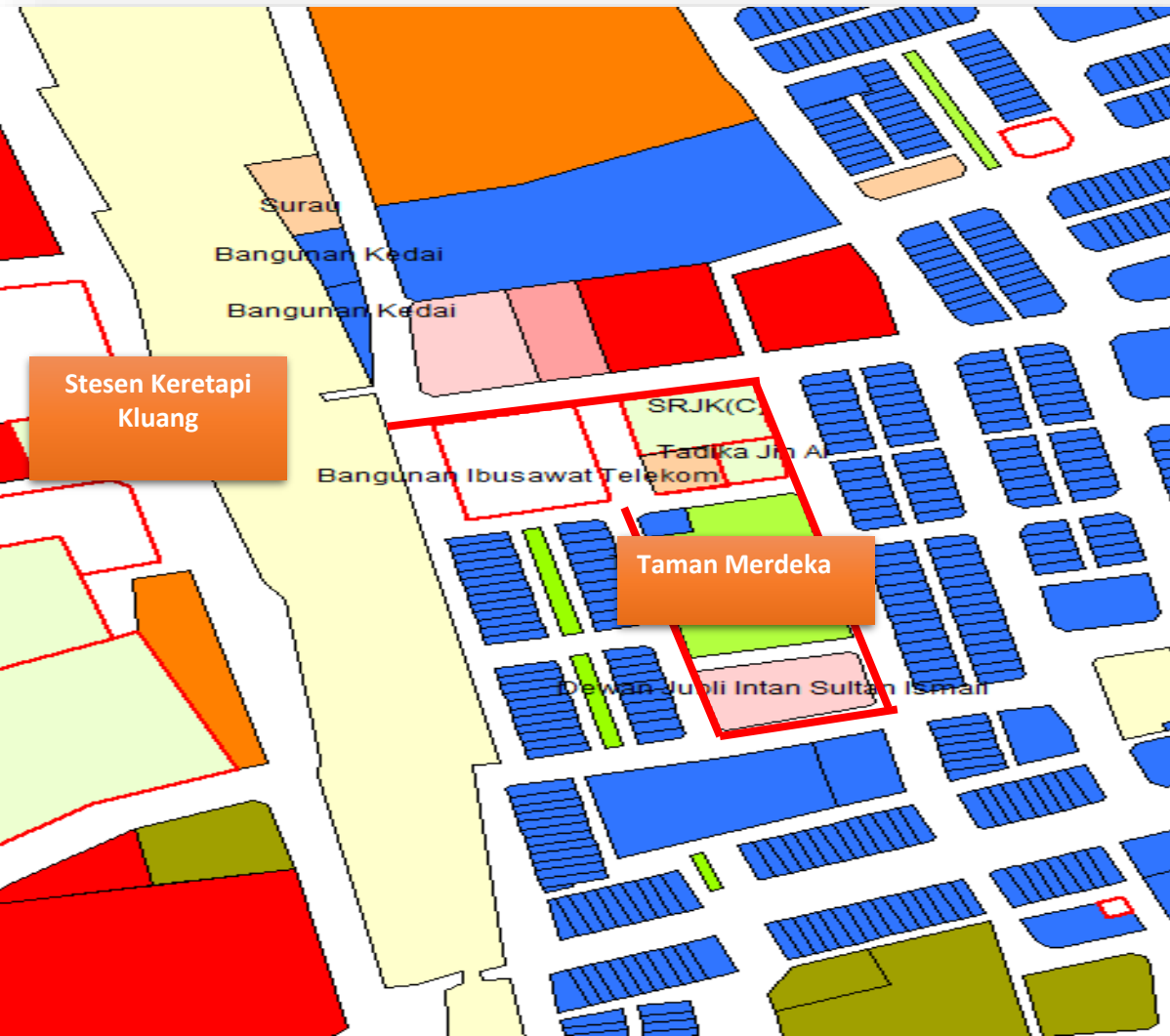


• AFTER



HEALTHY WALKABLE CITY

Site 2: Kluang (0.5 km)



HEALTHY WALKABLE CITY

Site 3: Kuala Terengganu

BEFORE



3 GOOD HEALTH AND WELL-BEING

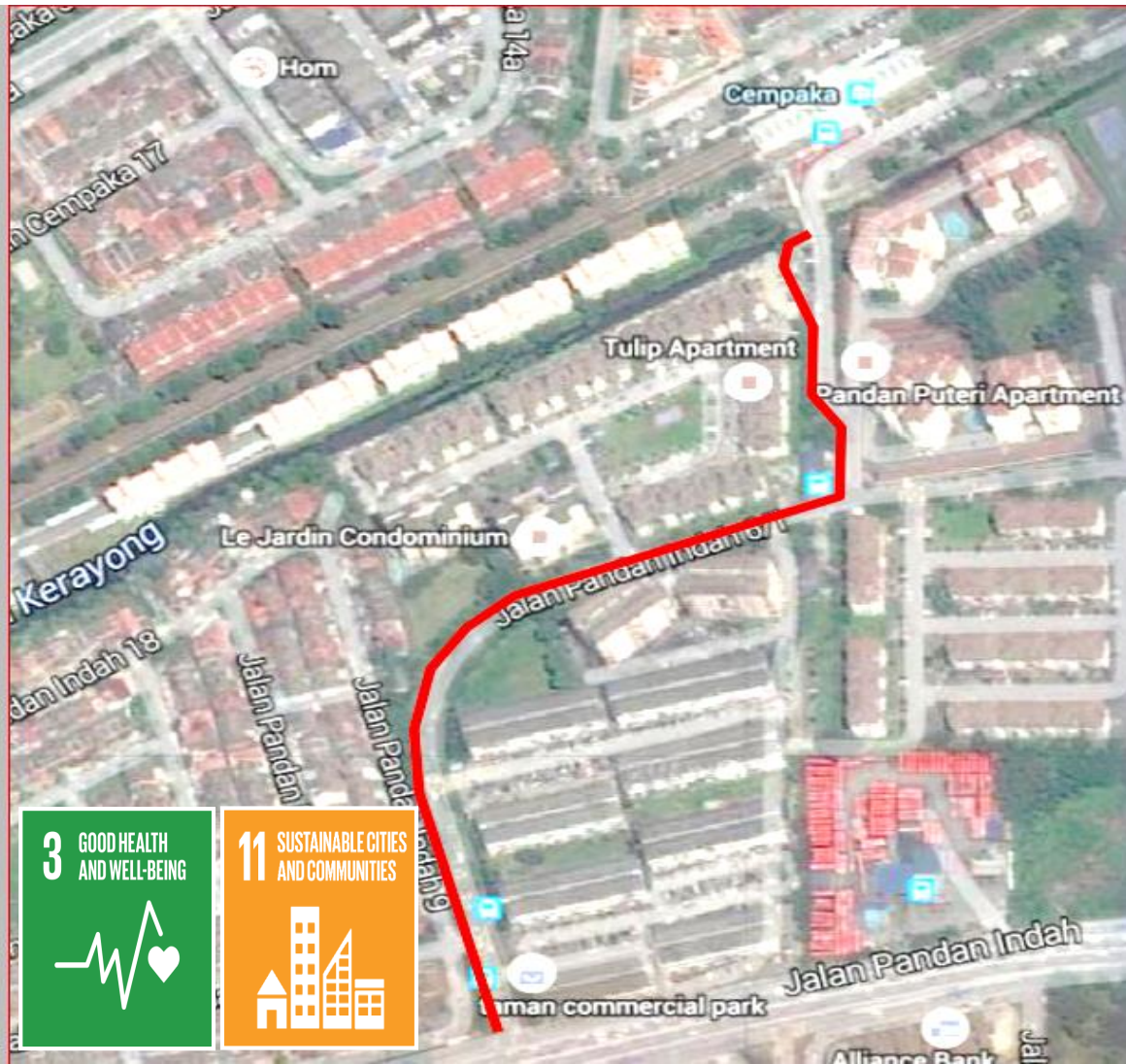


11 SUSTAINABLE CITIES AND COMMUNITIES



**TRANSIT ORIENTED
DEVELOPMENT (TOD)**

Site 4: LRT Station, Ampang KL



Site 5: Bidor

PLACEMAKING THROUGH POCKET PARK

Petai Lane @ Bidor, Perak



3 GOOD HEALTH AND WELL-BEING

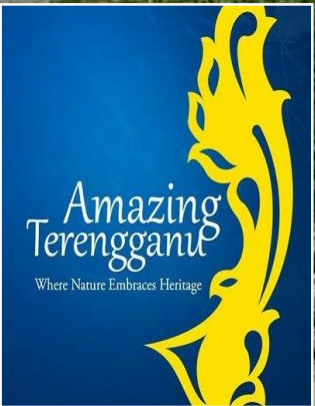


11 SUSTAINABLE CITIES AND COMMUNITIES



D

GOVERNING SUSTAINABLE DEVELOPMENT INITIATIVE | SDGs



Kuala Terengganu Drawbridge
MALAYSIA

**.....The first drawbridge built in
Southeast ASIA**

| MURNInets – Data Collection and Verification

National and State Operation Centre + 150 Local Authorities

17 PARTNERSHIPS
FOR THE GOALS



National Operation Centre



Ministry of Federal
Territories

PLANMalaysia
Perancangan Melangkaui Kelaziman
Planning: Beyond Conventional

20 Years Partnership

| SAFE CITY – Crime Blackspot Whitening Program

Agencies Collaboration – Blue Ocean Strategy

17 PARTNERSHIPS
FOR THE GOALS



Main Agency



Ministry of Federal
Territories

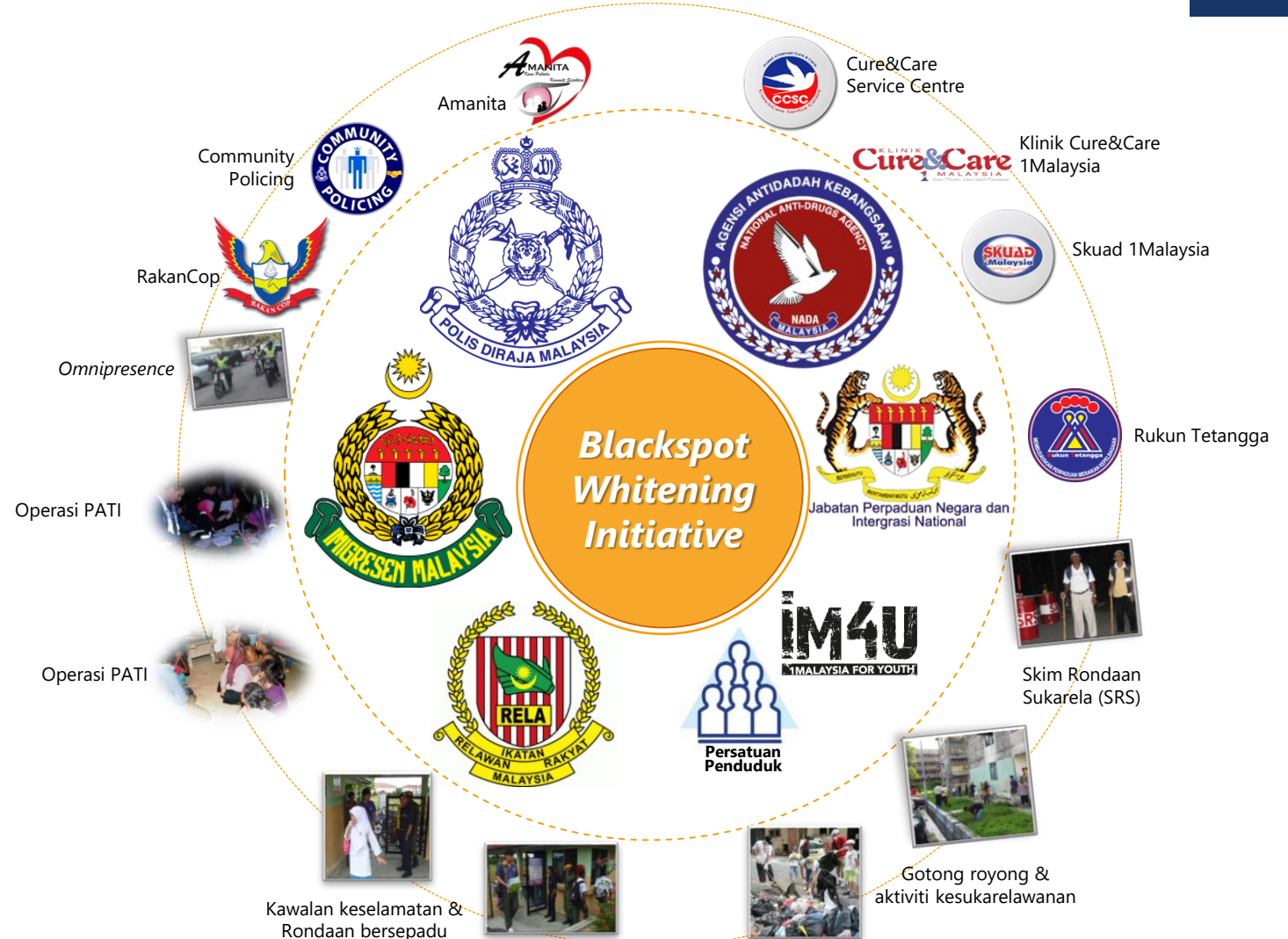
PLANMalaysia
Perancangan Melangkaui Kelaziman
Planning : Beyond Conventional



Ministry of Home
Affairs



Royal
Malaysia
Police (PDRM)





terima kasih



Copyright reserved @alias rameli | PLANMalaysia
aliasrameli@yahoo.com
019-7117700



PLANMalaysia
Perancangan Melangkaui Kelaziman
Planning : Beyond Conventional

