

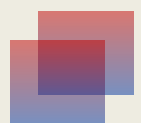
- 
- How our Urban Planning System has contributed to Sustainable Development Goals (SDG11)
~as a Coordinator of TOD projects in Japan
 - Roles played by UR to achieve common goals with practical examples.

-Experience of UR, Japan-



10 Feb. 2020

URA Masayuki



Director, International Business Department,
Urban Renaissance Agency (UR)

Contribution to the **SDG11** by UR

Urban renewal with

- ✓ Advancement of land use
- ✓ Strengthening of traffic nodes
- ✓ Creation of public spaces
- ✓ **TOD** “Transit Oriented Development”

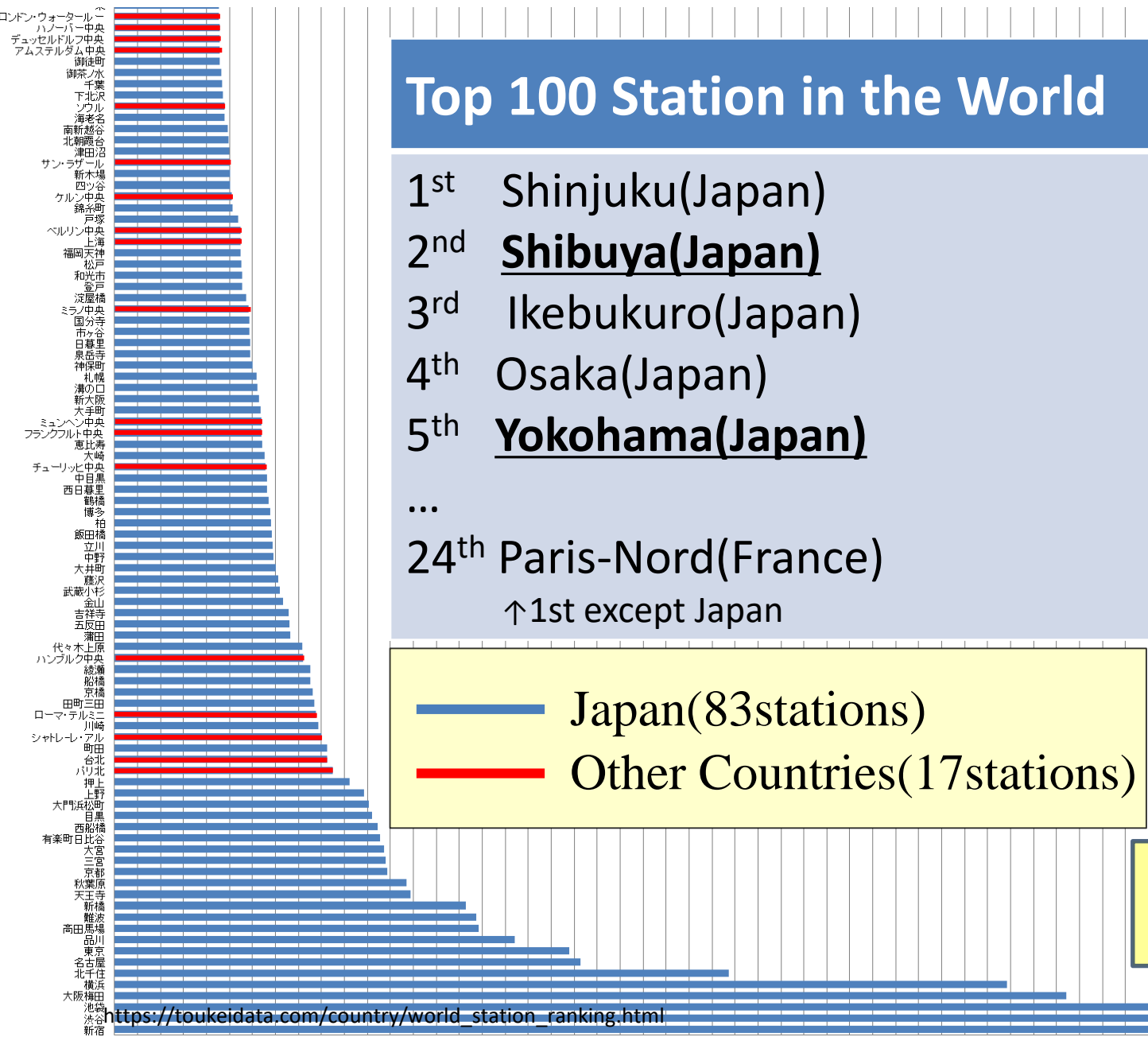


↓Shinjuku Station, TOKYO



https://search.yahoo.co.jp/image/search;_ylt=A2RinFTtQphd.R0AYAyU3uV7?p=%E6%96%B0%E5%AE%BF%E9%A7%85+%E4%B9%97%E9%99%E5%AE%A2%E3%80%80%E4%B8%96%E7%95%8C%E4%B8%80&aq=-1&oq=&ei=UTF-8#mode%3Ddetail%26index%3D27%26st%3D567

Need for **TOD** in Japan

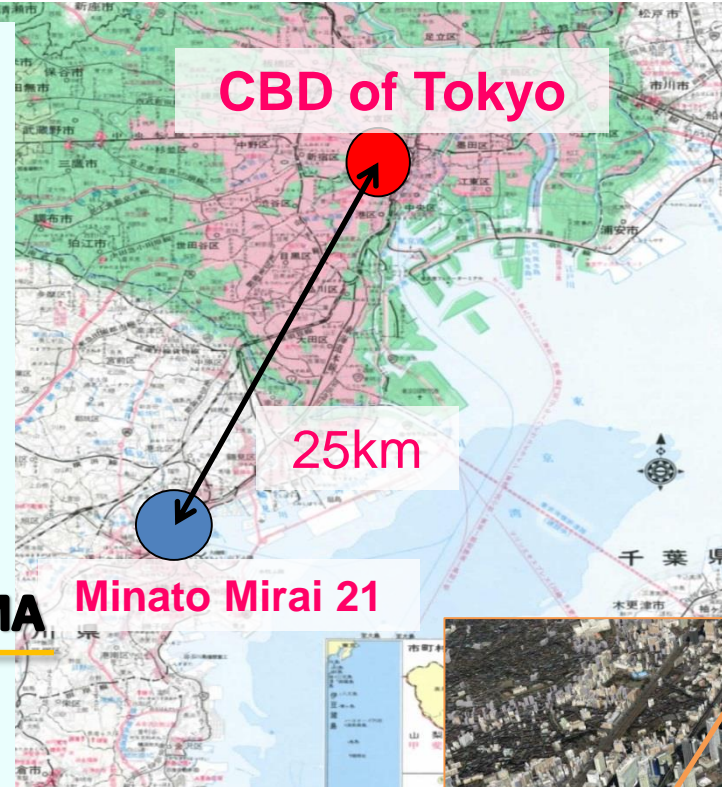


3.5million
passengers a day

Only **5km**
between 2 stations

Current Example Projects of UR

**Nissan Motor Co., Ltd.,
Global Headquarters**



YOKOHAMA

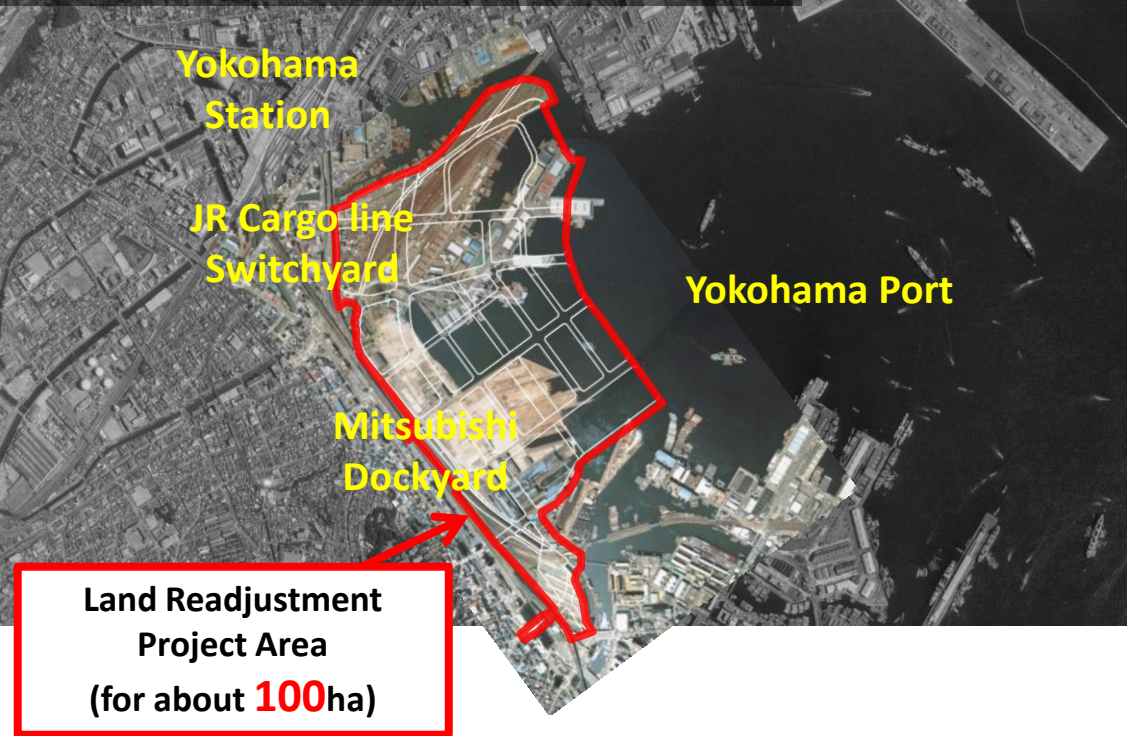


Minato Mirai 21(MM21) Project

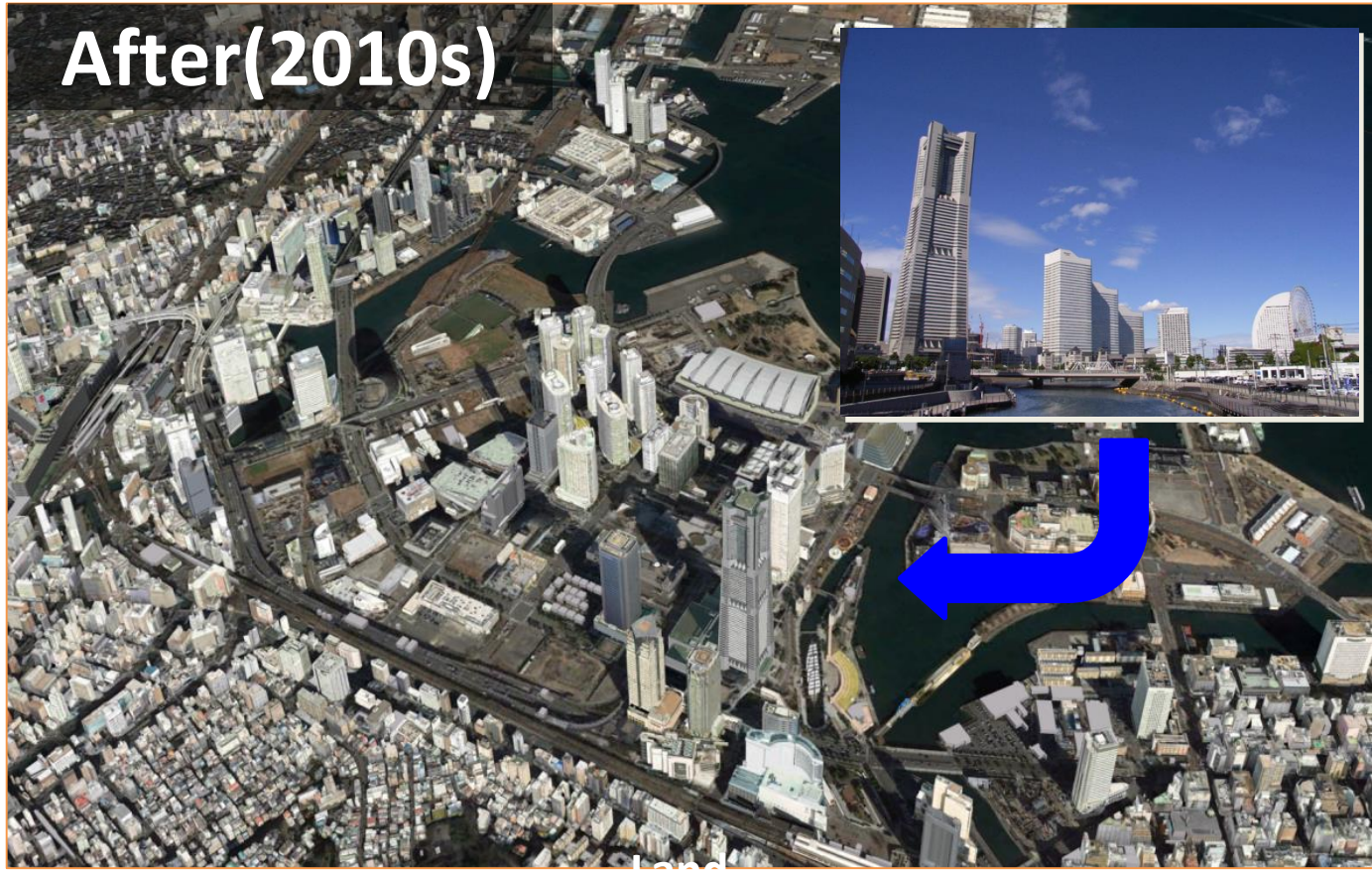


MM21 Urban Renewal Project

Before(1970s~)



After(2010s)



Urban renewal

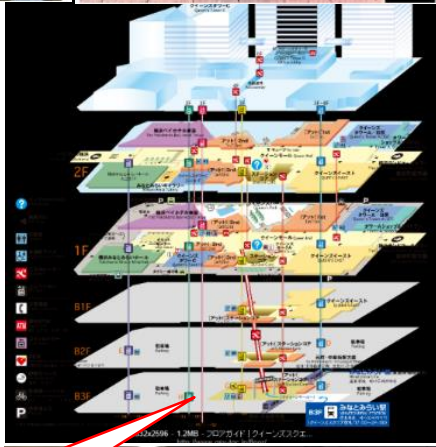
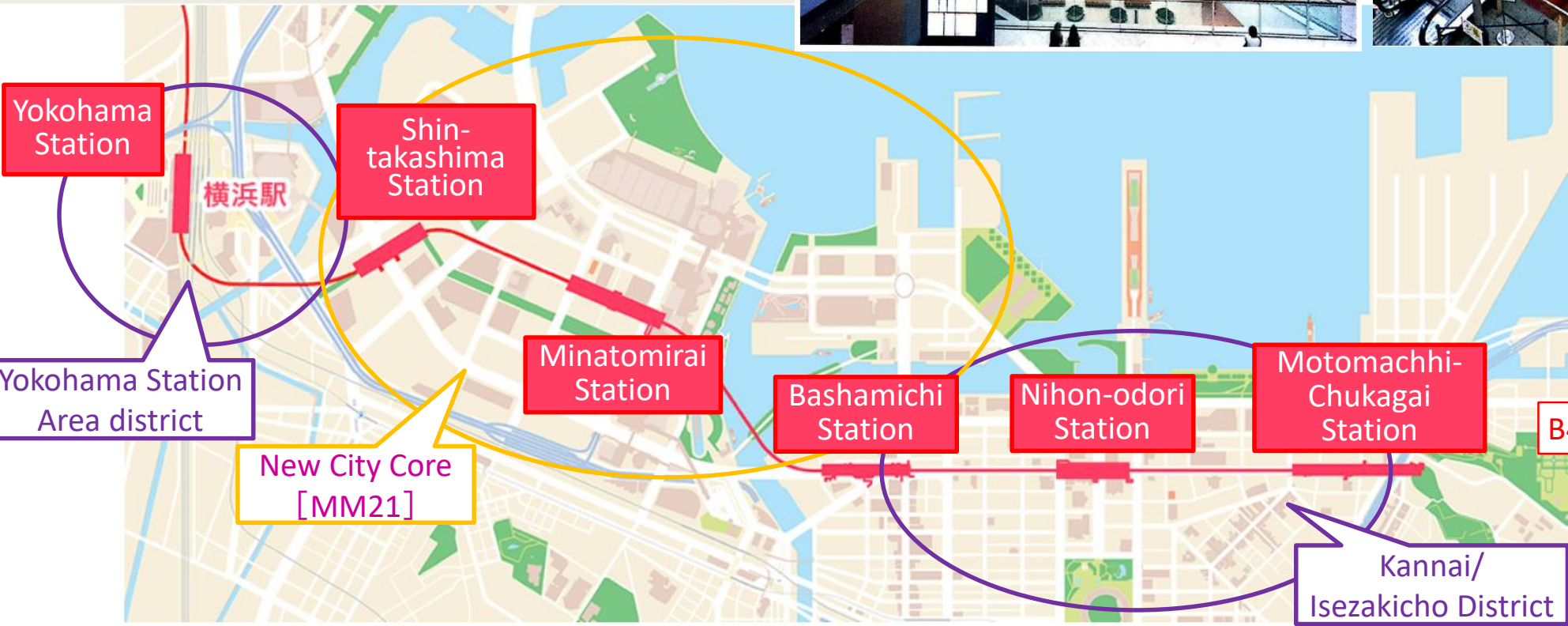
Before	After
Port Dockyard, Switchyard Sea	Commercial complex Business facility Apartment Building

83,000,000
Visitors/year

MM21 Project as **TOD**

Every stations has **800m** distance

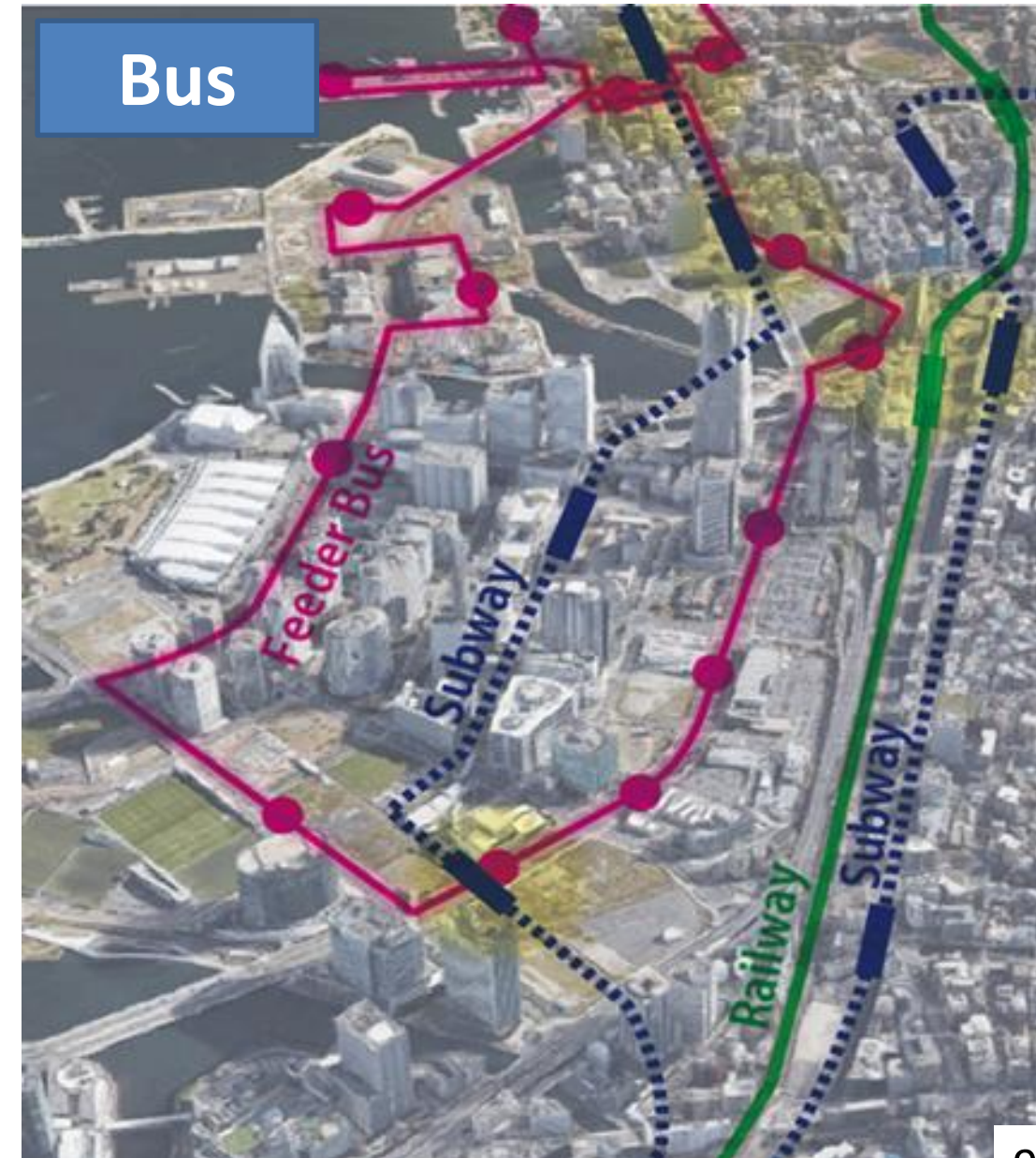
Direct access to the facilities and integrated station design enhanced visitor's experience



B4: Station



NO cars: TOD with Pedestrian Network & Bus Network





Yamanote Line ~railway loop line in Tokyo



Shibuya Station District ~The **Busiest** Intersection in the world ~



Shibuya Station District ~TOD in City Center~

Shibuya station

**4 operators, 8 lines,
3.2 million passengers**

Served with JR, TOKYU, KEIO and TOKYO-METRO, and 3.2 million passengers a day intersects the station, which number is the second-largest in the world.

4 Projects to be implemented

- 1 Improvement of railway facilities (JR,TOKYU and TOKYO-METRO)
- 2 Land Readjustment Project (TOKYU & **UR**)
- 3 Widening of the National Route 246 (National Government)
- 4 Commercial Development (Private sector)



[Shibuya station area aerial photo
(©TOKYU CORPORATION)]

After Redevelopment (Image)



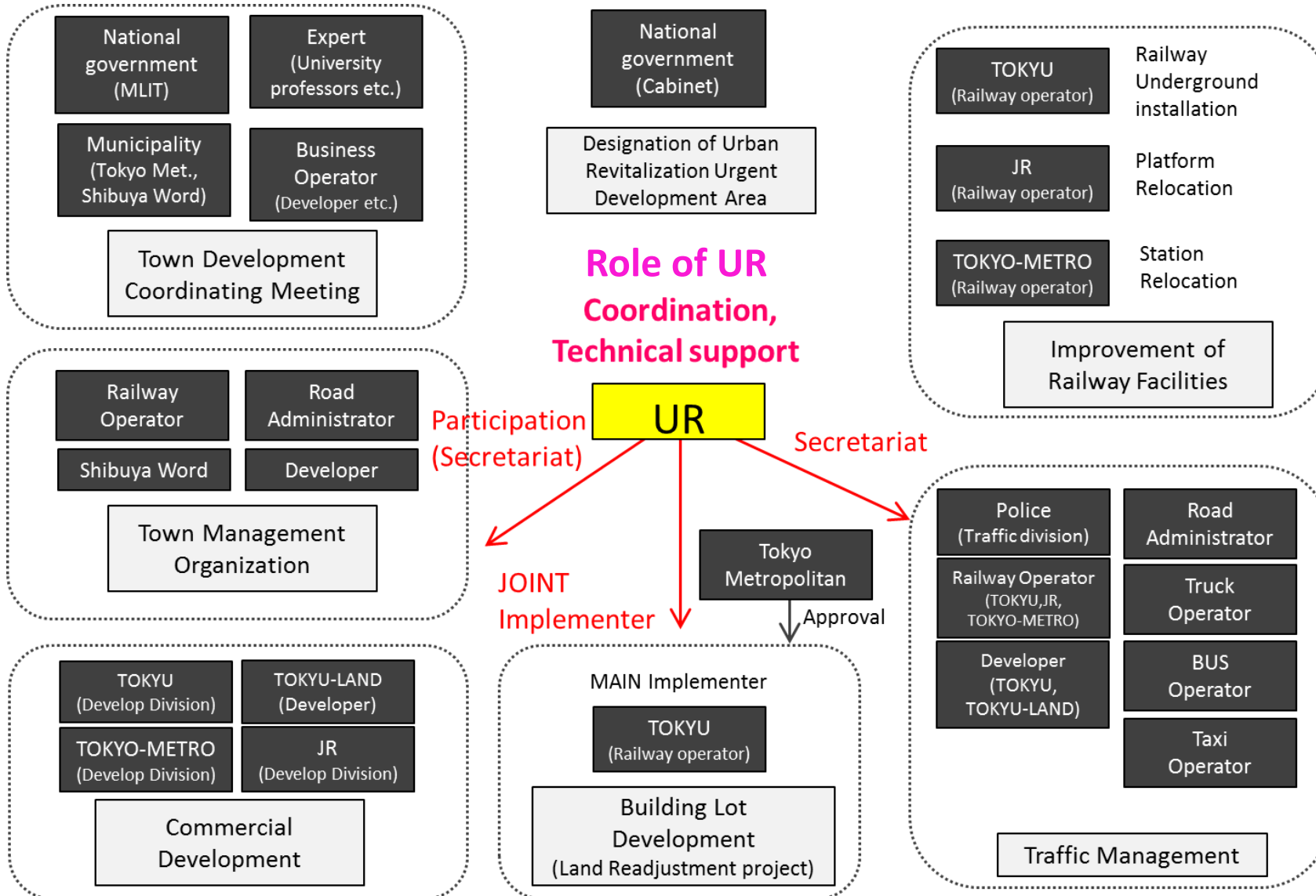
- **TOD**
- **Replace Infrastructure
(River, Railway, Road,
Pedestrian Network, etc.)**

[Image of Shibuya station area around 2027 (View from the sky) (©TOKYU CORPORATION)]

Copyright© Urban Renaissance Agency All rights reserved.

Shibuya Station District ~Role of UR~

Role of UR: Organizing Voluntary Coordination Group for Redevelopment



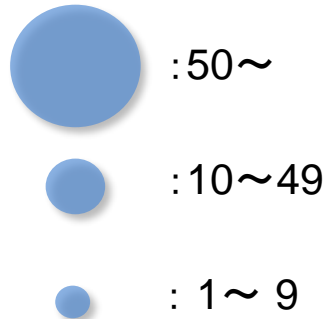
Our Achievements

Urban Redevelopment (Mostly **TOD**)

253 projects※

※Except for Suburban areas,
and Disaster Redevelopment

Number of projects



Representative Projects

Otemachi



Minato Mirai 21



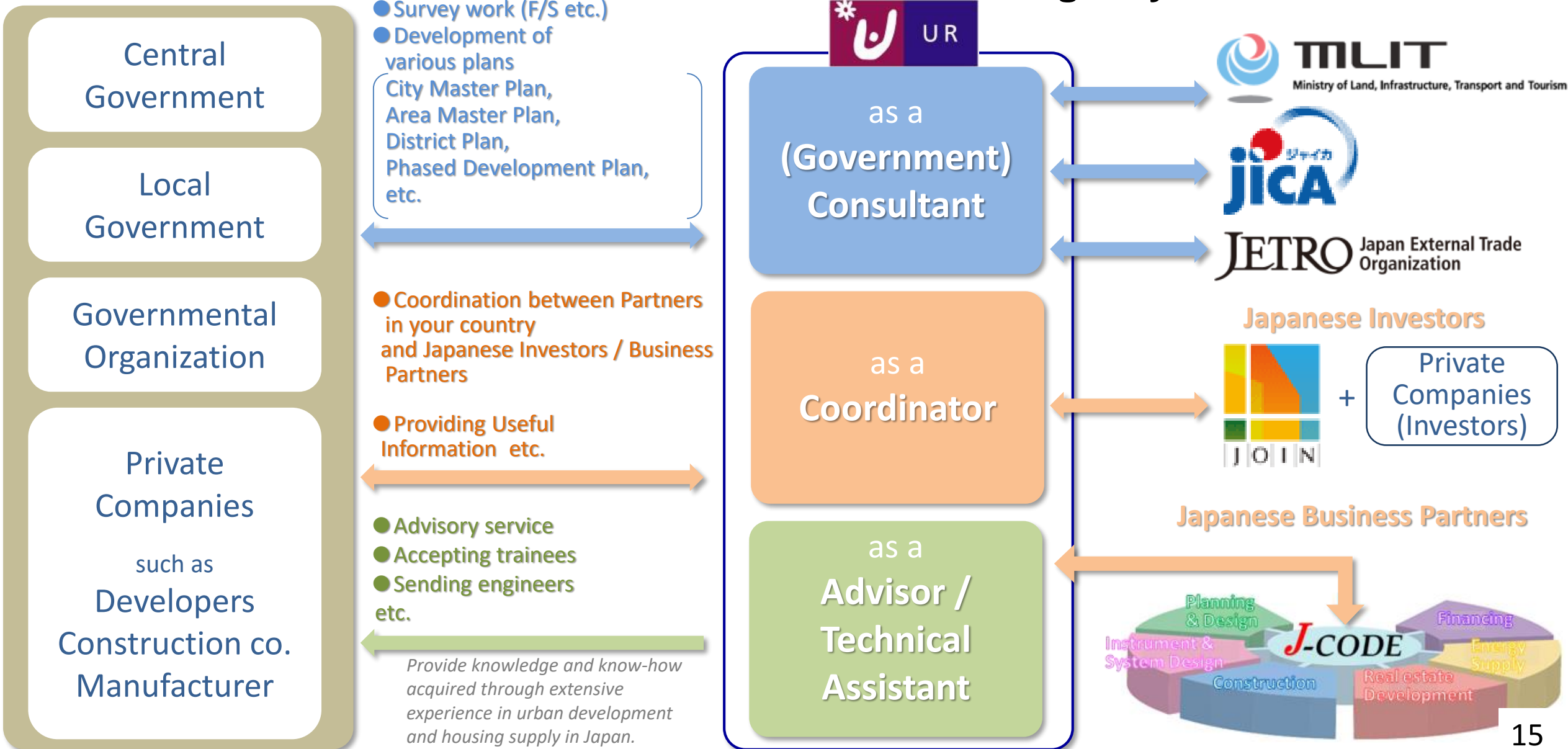
Umekita



What UR can do in your country?

Partner, Customer

Urban Renaissance Agency



Main supporting countries overseas

Representative Supporting Projects

Bang Sue (Thailand)

- JICA* Experts sent from UR
- Support for the formulation of Master Plan



Deltamas (Indonesia)

Support for the formulation of Master Plan



New South Wales (Australia)

Technical support for urban development



Business fields of UR in Japan

New Town Development

Safe and comfortable life in the suburbs

- To advance safe, secure, and eco-friendly city building coping with aging population and lower birthrate
- To realize attractive suburban life or local living



Minato Mirai 21 (Yokohama)

Rental Housing

Manages and provides rich living space.

- To manage rental housing through cherishing trust relationship with 740,000 units
- To promote to live in the urban center, to secure stable rental housing for elderly, to improve child care environment.



Nouvel Akabane-dai Housing Complex (Tokyo)

Urban Renewal

In cooperation with private businesses and local authorities.

- To coordinate Vision, Planning and Conditions
- To join the project as a partner



Otemachi District (Tokyo)

Disaster Restoration

Supports reconstruction and installs preventive function.

- To promote building disaster resilient urban area



Onagawa Town (Miyagi)

Our Achievements



New Town
292 projects
44,000 hectares



Housing
1.58 million units



Thank you for your attention

Designing cities where people can shine

Urban Renaissance Agency [UR] is a semi-governmental organization originally established in 1955 as Japan Housing Corporation to address urban and housing agendas in Japan. Taking advantage of such position and our extensive experiences in projects, we have worked closely with governmental and private sectors, steadily implementing a wide variety of projects.

UR has led large-scale, quality urban development and housing projects at the forefront, and has also made significant contributions to institutional designs and technological growth. We continue to extend a major influence in the field of urban development in Japan.

And now, we are eager to support designing and realizing "a city where people can shine" in your country - which is our fundamental mission.



We are UR JAPAN

For more information, visit

<http://www.ur-net.go.jp/overseas/index.html>